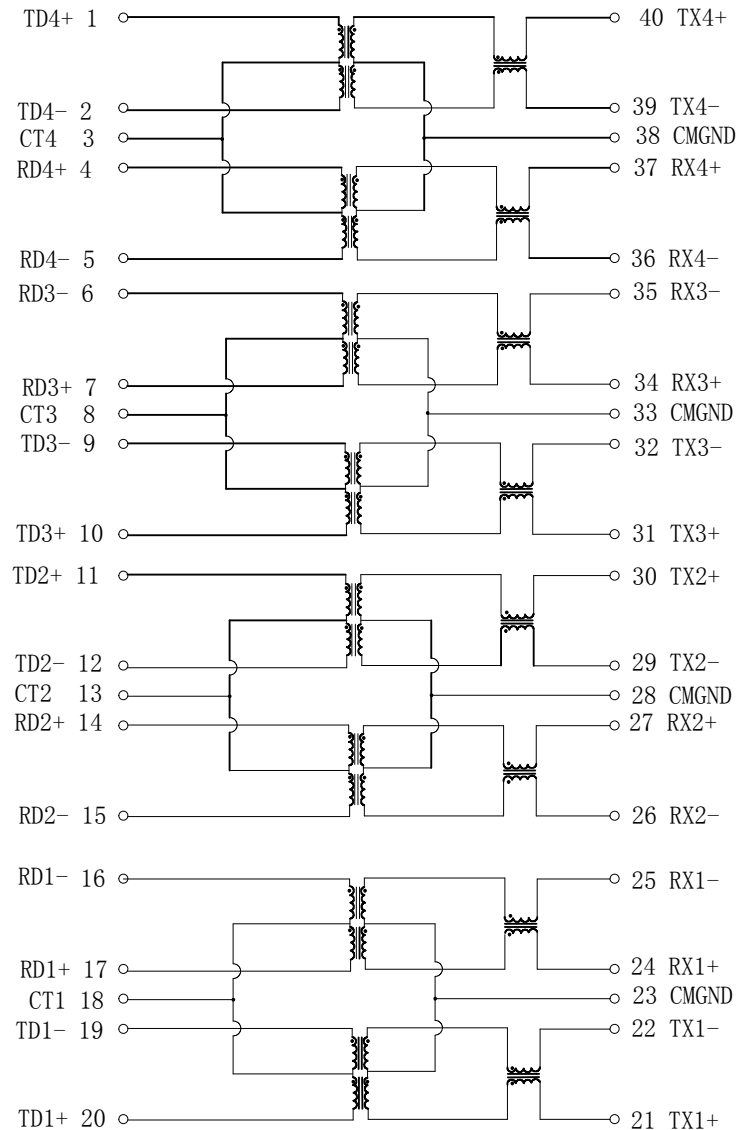


Schematic:



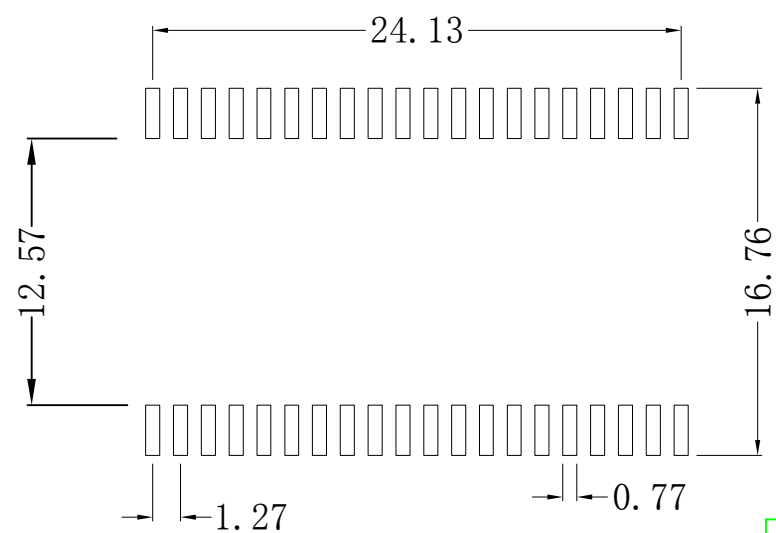
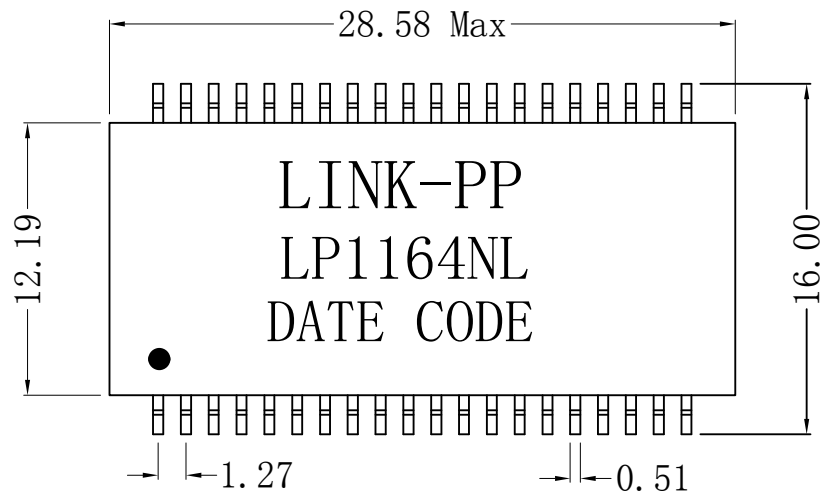
Electrical Specifications @25°C

- Turns Ratio ($\pm 5\%$):
TX=1CT : 1CT RX=1CT : 1CT
- Insertion Loss:
0.1-100MHz: -1.0dB MAX
- Return Loss (dB MIN):
2-30MHz: -18; 40MHz: -14.4
50MHz: -13.1; 60-80MHz: -12
- Crosstalk (dB MIN):
0.1MHz: -55; 30MHz: -45
60MHz: -40; 100MHz: -33
- DCMR (dB MIN):
1-60MHz: -37; 60-200MHz: -25
- Hipot: 1500Vrms
- Operating Temperature: $-40^{\circ}\text{C} \sim +85^{\circ}\text{C}$.

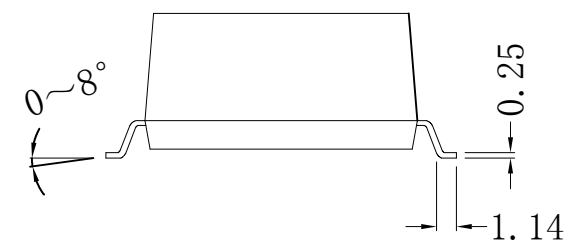
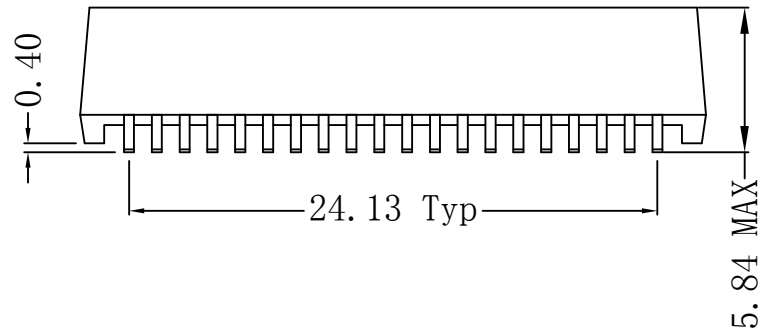
X:X	APPD:	LINK-PP INT'L TECHNOLOGY CO., LIMITED		
X:XX	CHKD:	TITLE: Quad Port 10/100Base-TX Transformer Modules		
X:XXX	DR: TOM	PART NO.: LP1164NL		
ANGLES $\pm 1^{\circ}$	UNIT: mm	SCALE: 2/1	SHEET: 1/2	REV: A DWG NO.: LP10051235

Mechanical :

REV.	ECN NO.	DESCRIPTION	DATE	APPD
A	REL		2013/05/12	



SUGGESTED PAD LAYOUT



NOTES:

1. Designed to support application, such as SOHO (ADSL modems), LAN-on-Motherboard (LOM), hub and Switches.
2. With various Turns Ratios, Meets IEEE 802.3 specification
3. 350uH min OCL with 8mA bias current.
4. RoHS "NL" peak solder rating 260°C.
5. UL Certification: File Number E484635

Dimensions: mm

Unless otherwise specified, all tolerances are ± 0.25

X:X	APPD:	LINK-PP INT'L TECHNOLOGY CO., LIMITED		
X:XX	CHKD:	TITLE: Quad Port 10/100Base-TX Transformer Modules		
X:XXX	DR: TOM	PART NO.: LP1164NL		
ANGLES $\pm 1^\circ$	UNIT: mm			
	SCALE: 2/1	SHEET: 2/2	REV: A	DWG NO.: LP10051235