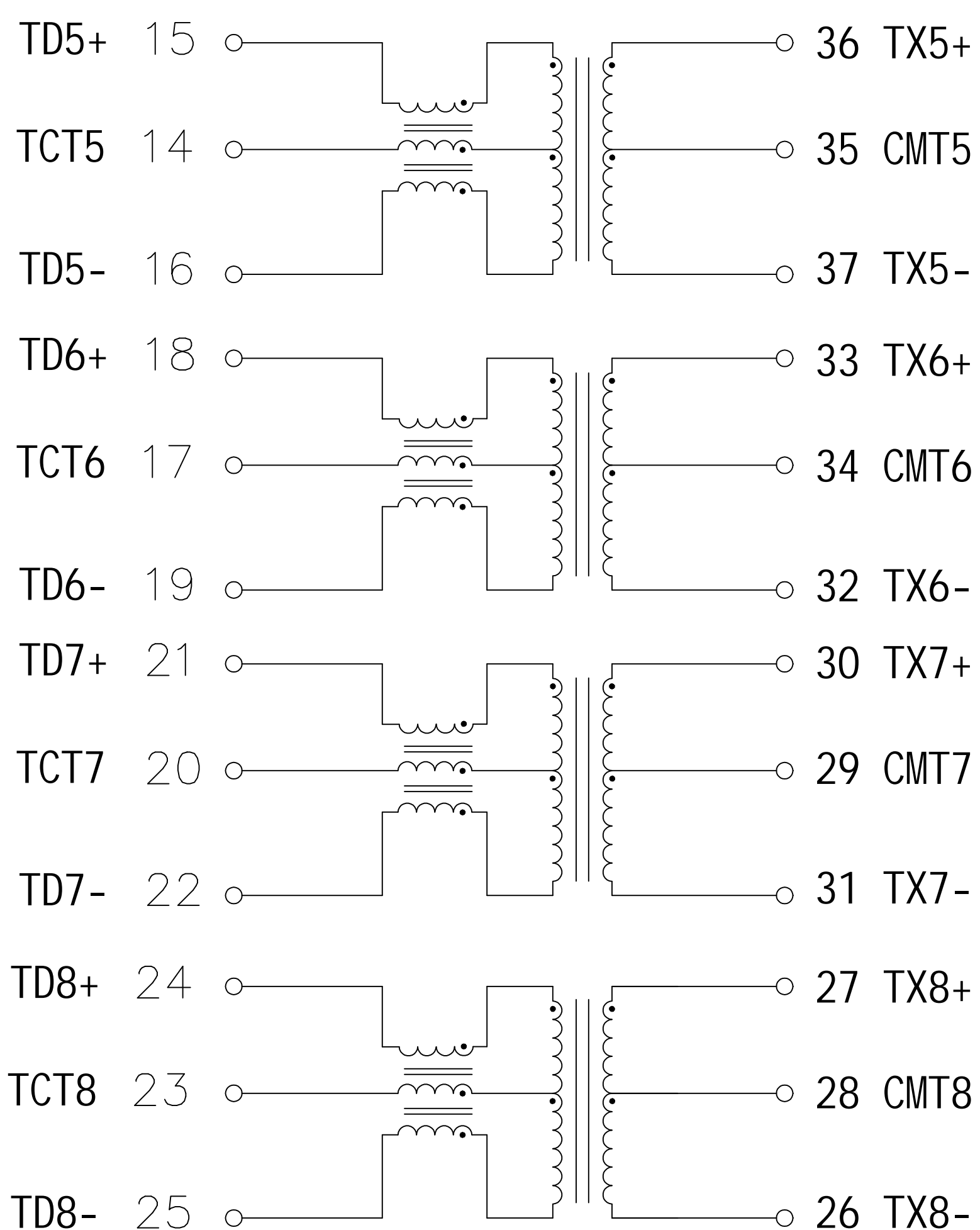
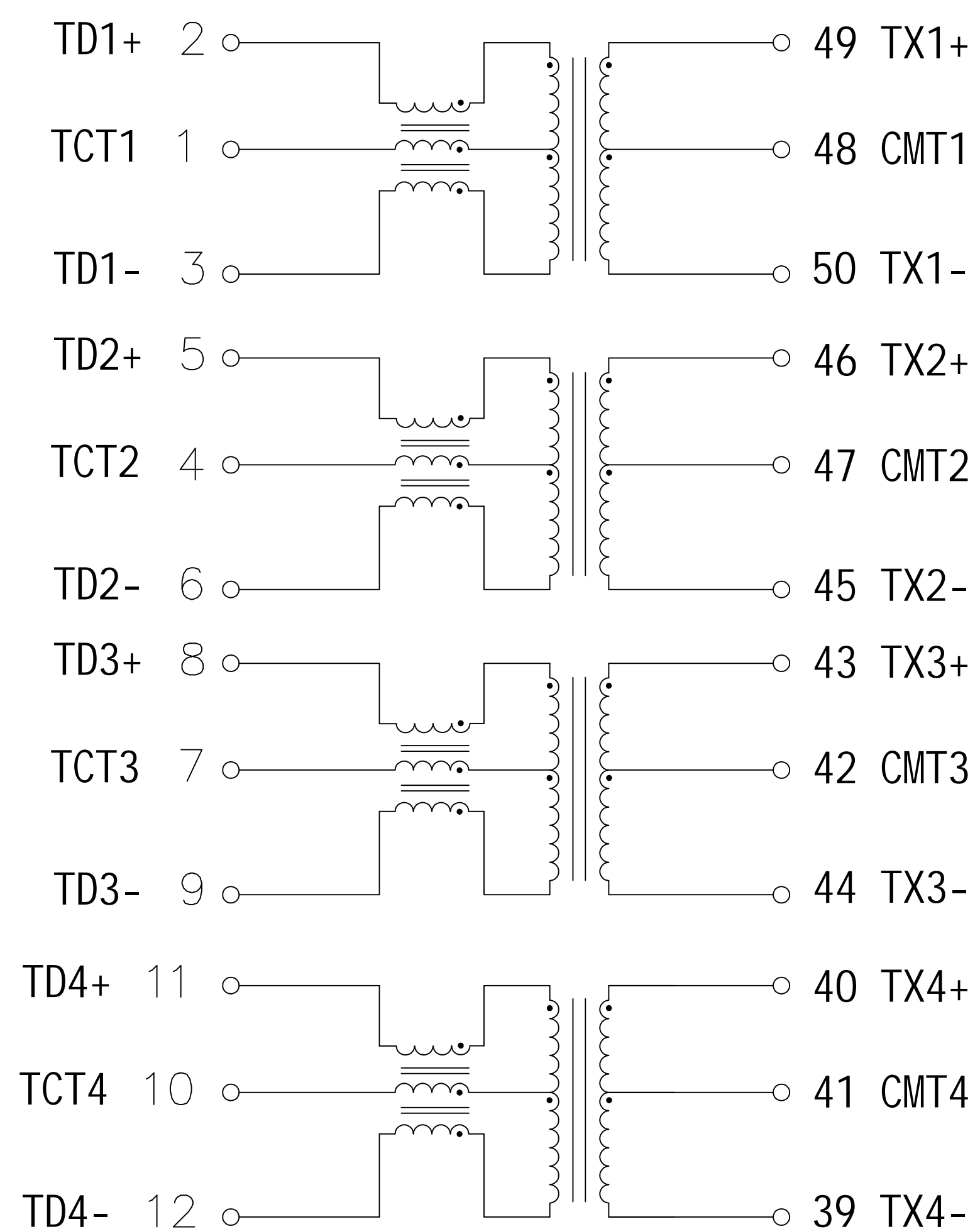


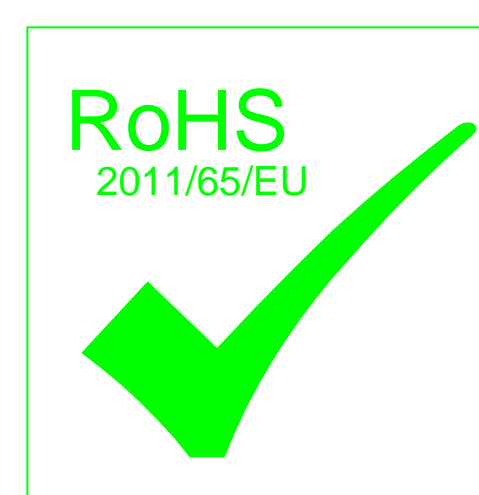
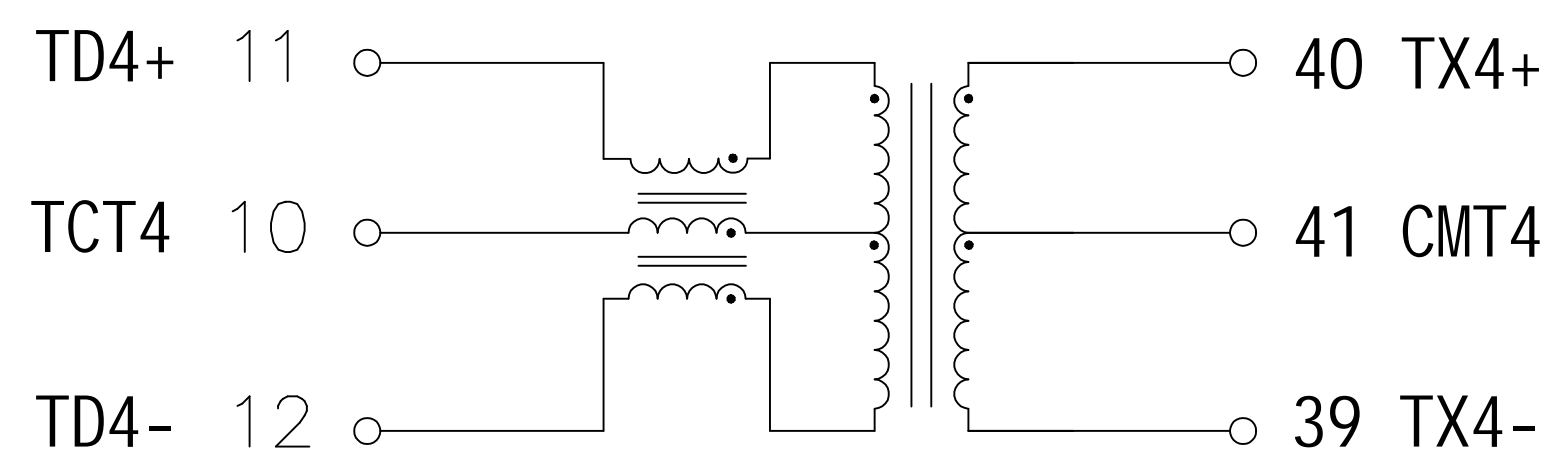
Schematic:

REV.	ECN NO.	DESCRIPTION	DATE	APPD
A	REL		2023-07-19	



Electrical Specification @25°C

- Turns Ratio:
Pri : Sec = 1CT : 1CT ±5%
- Inductance(OCL):
160uH Min @100KHz, 100mV.
- Insertion Loss(dB Max):
1-125MHz: -1.2
- Return Loss(dB Min @Z OUT = 100 OHMS ±1%):
1-40MHz: -18 40-80MHz: -12 125MHz: -10
- Crosstalk(dB Min):
30MHz: -40 60MHz: -35 80MHz: -30
- Common to Differential Mode Rejection(dB Min):
30MHz: -35 100MHz: -30 125MHz: -25
- Hipot: Input - Output: 1500Vrms
- Operating Temperature: -40°C ~ +85°C.



X.X	±0.30	APPD: TOM	LINK-PP INT'L TECHNOLOGY CO., LIMITED
X.XX	±0.25	CHKD: JAMES	TITLE:
X.XXX	±0.15	DR: JULY	2.5G BASE-T MAGNETIC MODULES
ANGLES	±1°	UNIT: mm	PART NO.: LP75001ANL
		SCALE: 2/1	SHEET: 1/2
		REV: A	DWG NO.: LP23071909

LINK-PP

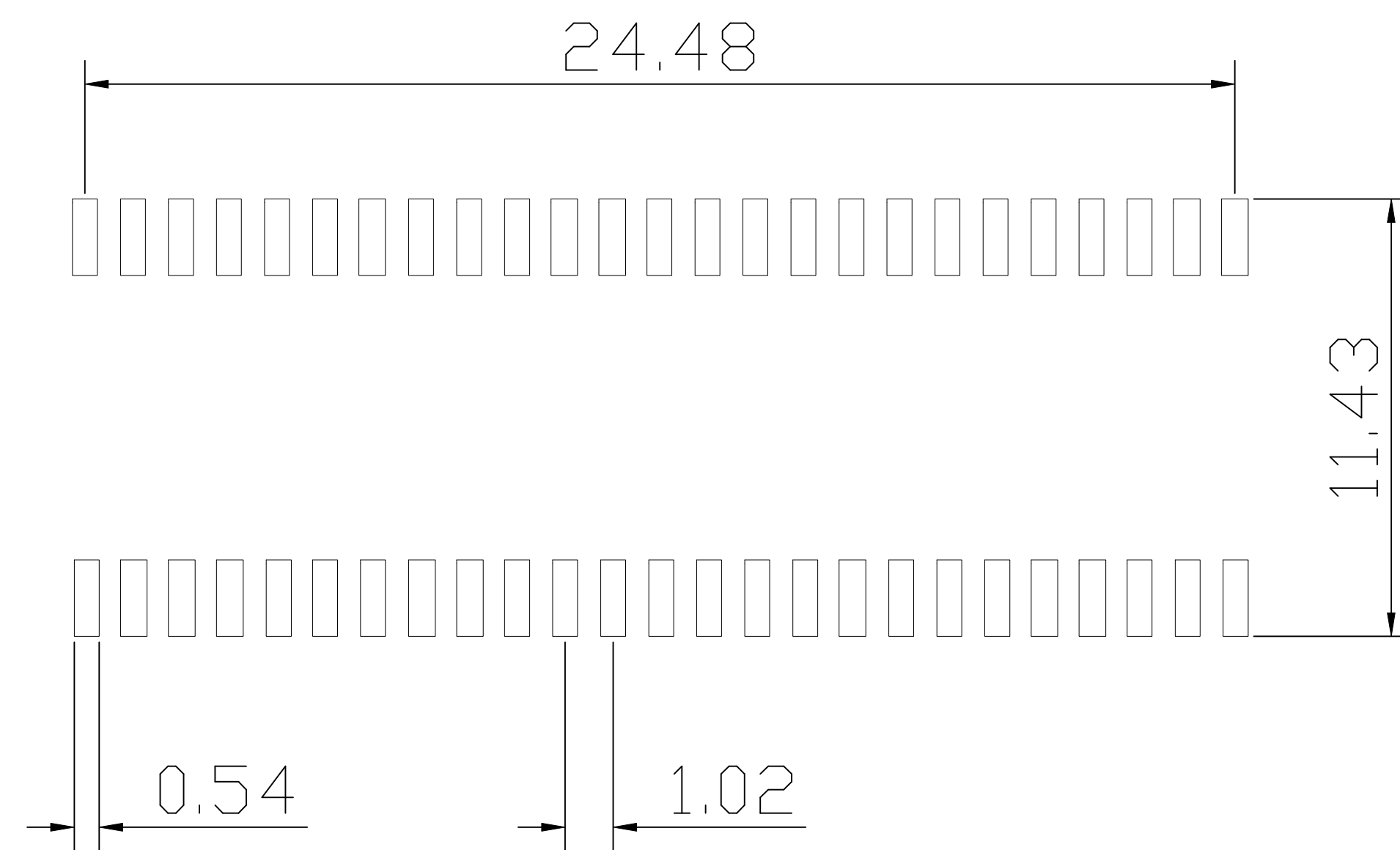
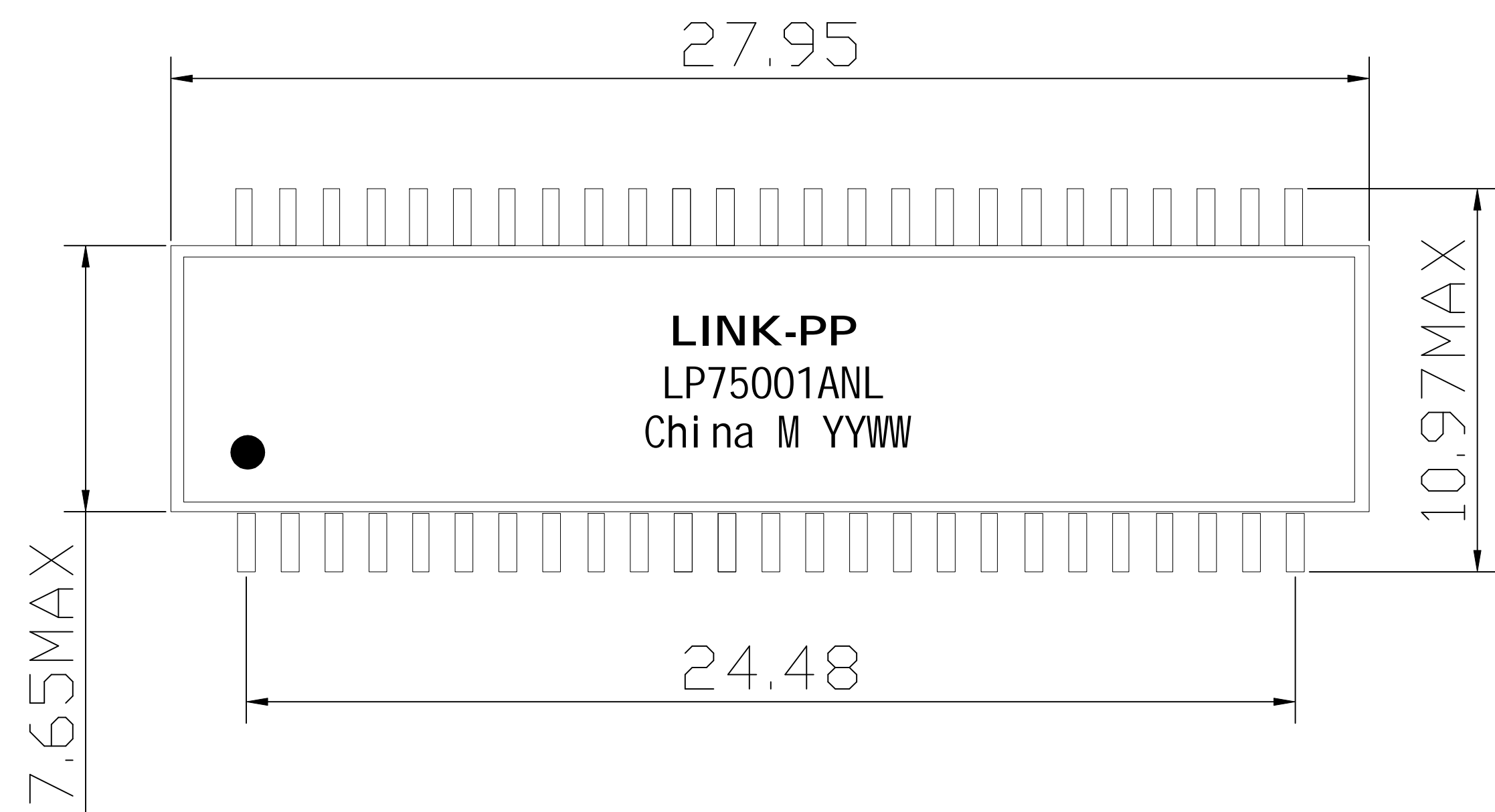
Website: <http://www.link-pp.com> Email: info@link-pp.com

Tel: +86-0752-3322916

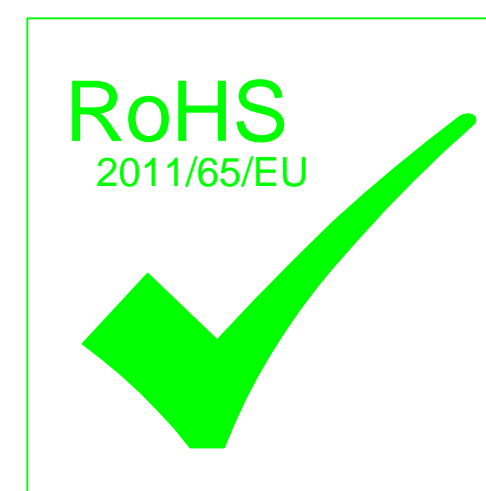
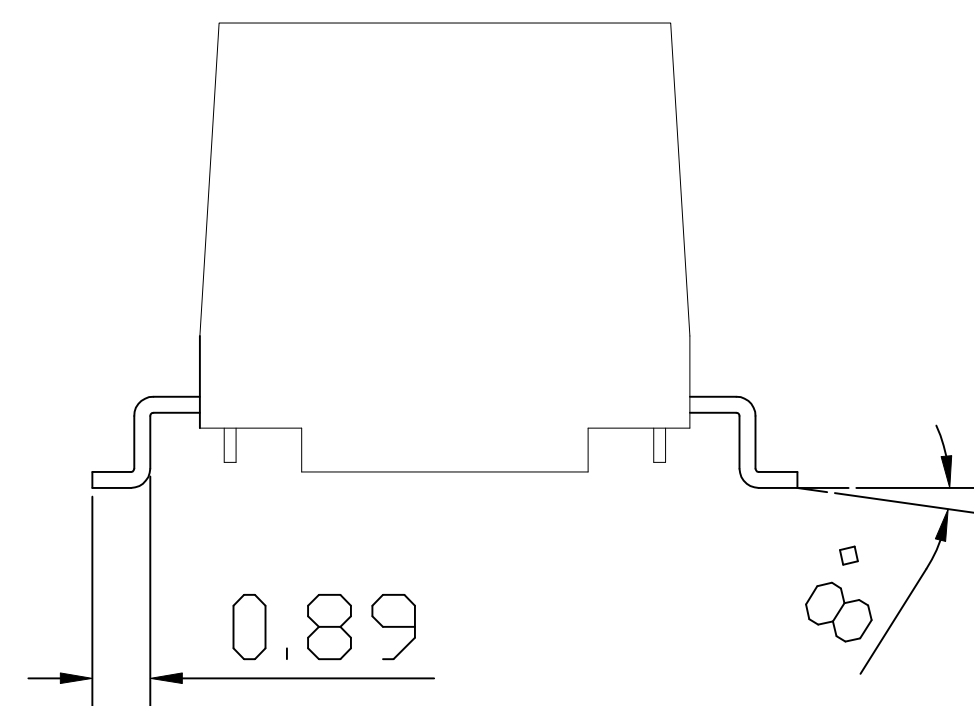
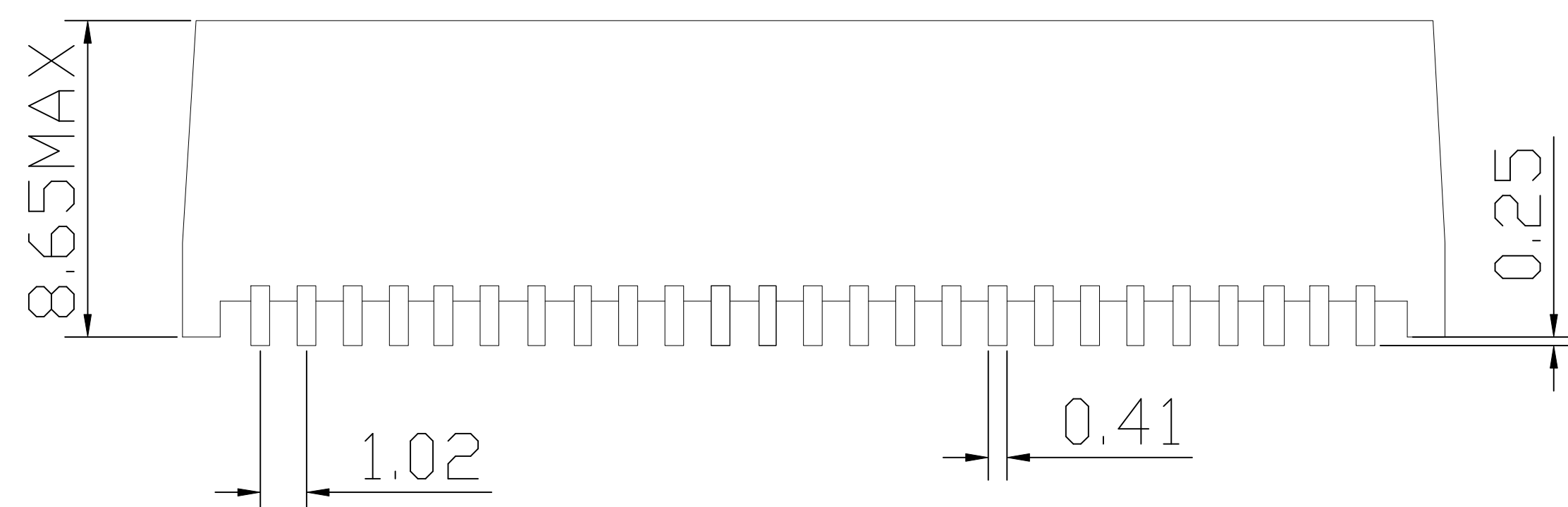
Fax: +86-0752-3161926

Mechanical :

REV.	ECN NO.	DESCRIPTION	DATE	APPD
A	REL		2023-07-19	



RECOMMENDED PCB LAYOUT



NOTES:

1. Designed to support application, such as SOHO (ADSL modems), LAN-on-Motherboard (LOM), hub and Switches.
2. Meets IEEE 802.3 specification.
3. Maximum reflow temperature is 250°C, 5 Sec.
4. UL certification: file number E484635.

X.X	±0.30	APPD: TOM	LINK-PP INT'L TECHNOLOGY CO., LIMITED
X.XX	±0.25	CHKD: JAMES	TITLE:
X.XXX	±0.15	DR: JULY	2.5G BASE-T MAGNETIC MODULES
ANGLES	±1°	UNIT: mm	PART NO.: LP75001ANL
	SCALE: 2/1	SHEET: 2/2	REV: A DWG NO.: LP23071909

LINK-PP

Website: <http://www.link-pp.com> Email: info@link-pp.com

Tel: +86-0752-3322916

Fax: +86-0752-3161926