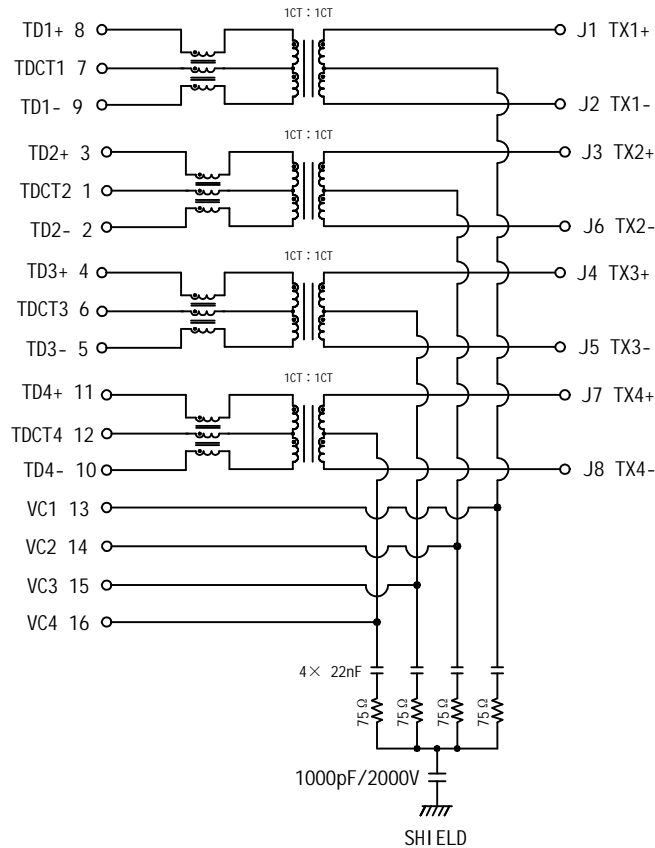


Schematic:

| REV. | ECN NO. | DESCRIPTION | DATE | APPD |
|------|---------|-------------|------------|------|
| A6 | REL | | 2023-03-19 | |

PC BOARD CONNECTIONS

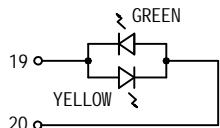


RJ45 CONNECTOR

ELECTRICAL SPECIFICATIONS @25°C

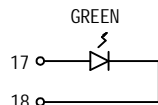
- Turn Ratio(±2%):
Pri:Sec = 1CT:1CT
- Inductance OCL:
120uH Min @100KHz 0.1V 8mA
- Insertion Loss:
-1.5dB Max @1-250MHz
-3.0dB Max @250-500MHz
- Return Loss:
-18dB Min @1-40MHz
-14dB Min @40-100MHz
-11dB Min @100-250MHz
-8dB Min @250-500MHz
- Cross talk:
-30dB Min @1-100MHz
-20dB Min @100-500MHz
- Common Mode Rejection Ratio:
-28dB Min @1-100MHz
-22dB Min @100-250MHz
-20dB Min @250-500MHz
- Balance DC Line current:
720mA Max @57VDC Continuous.
1000mA Max @57VDC For 200 Milliseconds.
- Isolation PHY SIDE To Line SIDE : 1500Vrms
According to IEEE 802.3 standard, 2250VDC is equivalent to 1500Vrms isolation voltage.
- Operating Temperature Range: -40°C to +85°C.

| Emitting Color | λp(nm) | V _F @I _F =20mA | I _R @V _R =5V |
|----------------|--------|--------------------------------------|------------------------------------|
| GREEN | 565 | 1.8-2.6V | 10 μA max |
| YELLOW | 585 | 1.8-2.6V | 10 μA max |



LEFT LED

| LED POLARITY | | COLOR |
|--------------|--------|--------|
| PIN 19 | PIN 20 | |
| + | - | YELLOW |
| - | + | GREEN |



RIGHT LED

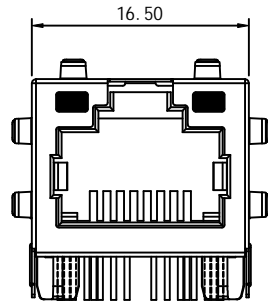
| LED POLARITY | | COLOR |
|--------------|--------|-------|
| PIN 17 | PIN 18 | |
| + | - | GREEN |



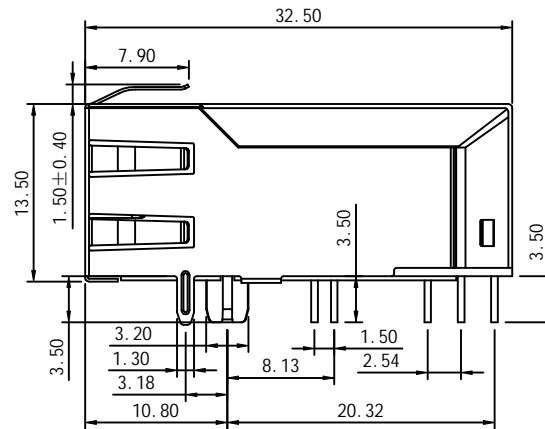
| | | |
|---|-------------|---|
| X: X ±0.30 | APPD: TOM | LINK-PP INT'L TECHNOLOGY CO., LIMITED |
| X: XX ±0.25 | CHKD: JAMES | |
| X: XXX ±0.05 | DR: LEO | |
| ANGLES ±1° | UNIT: mm | TITLE: RJ45 Connector with 10G Base-T Integrated Magnetics For PoE+ Application |
| PART NO.: LPJMP9696A9NL | | |
| SCALE: 2/1 SHEET: 1/2 REV: A6 DWG NO.: LP23031955 | | |

Mechanical :

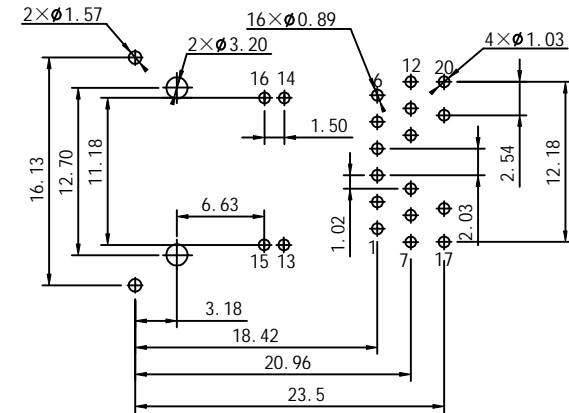
| REV. | ECN NO. | DESCRIPTION | DATE | APPD |
|------|---------|-------------|------------|------|
| A6 | REL | | 2023-03-19 | |



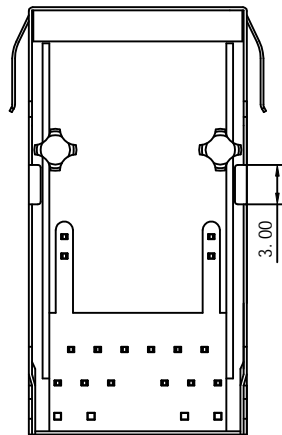
Front Side View



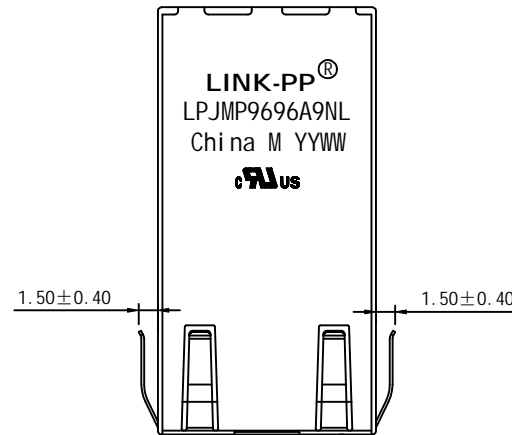
Left Side View



Suggested PCB Layout (Top View)



Bottom Side View



Top Side View



NOTES:

1. Designed to support application, such as SOHO (ADSL modems), LAN-on-Motherboard (LOM), hub and switches.
2. Meets IEEE 802.3at specification
3. Connector Materials:
 Housing Material: Thermoplastic PBT+30%G. F UL94V-0
 Contact Material: Phosphor Bronze C5210R-EH Thickness=0.35mm
 Pins: Brass C2680R-H Thickness=0.35mm
 Shield: SUS 304 1/2EH Thickness=0.2mm
 Contact plating: Gold 6 micro-inches min. In contact area.
4. Wave solder tip temperature: 250°C, 5 Sec.
5. UL Certification: File Number E484635.

| | | | | |
|--------|------------|--------|-------|---|
| X: X | ±0.30 | APPD: | TOM | LINK-PP INT'L TECHNOLOGY CO., LIMITED |
| X: XX | ±0.25 | CHKD: | JAMES | |
| X: XXX | ±0.05 | DR: | LEO | TITLE: RJ45 Connector with 10G Base-T Integrated Magnetics For PoE+ Application |
| ANGLES | ±1° | UNIT: | mm | PART NO.: LPJMP9696A9NL |
| | SCALE: 2/1 | SHEET: | 2/2 | REV: A6 DWG NO.: LP23031955 |