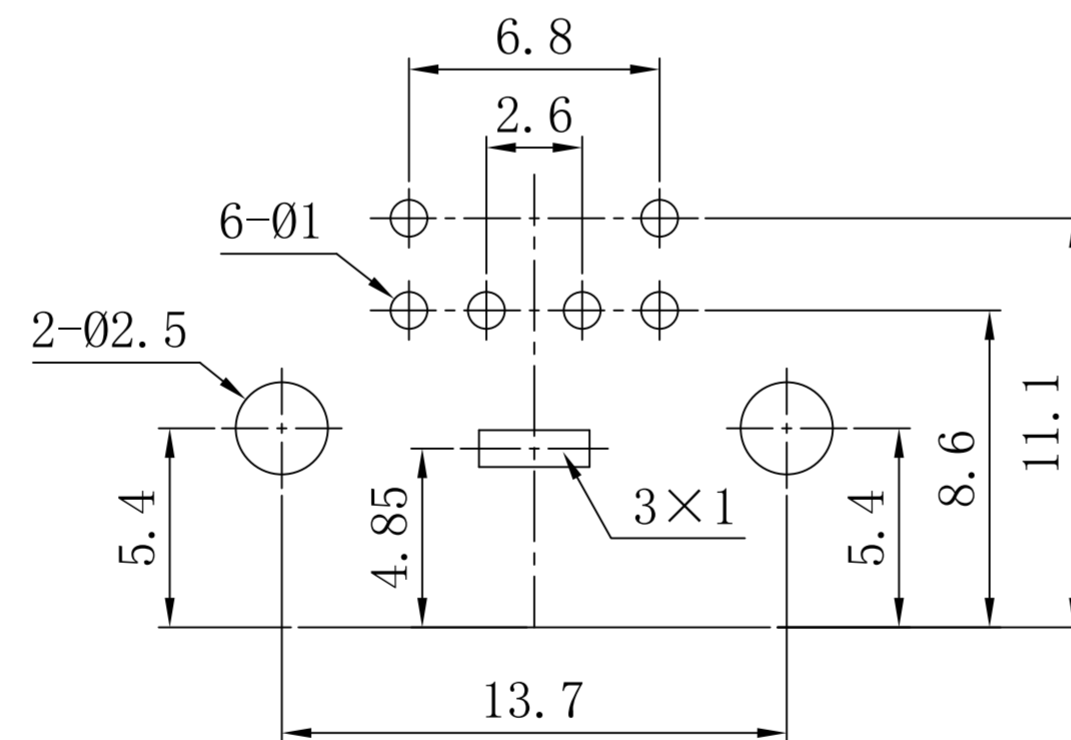
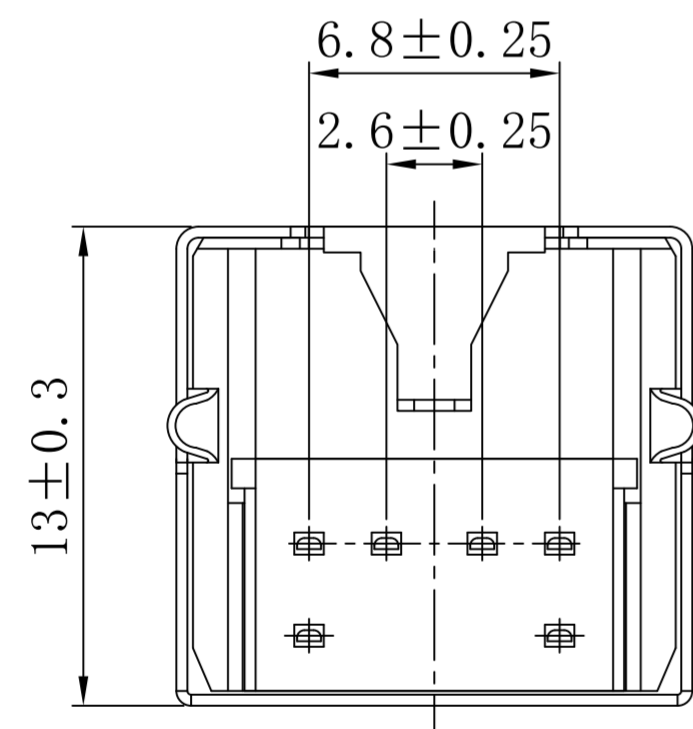
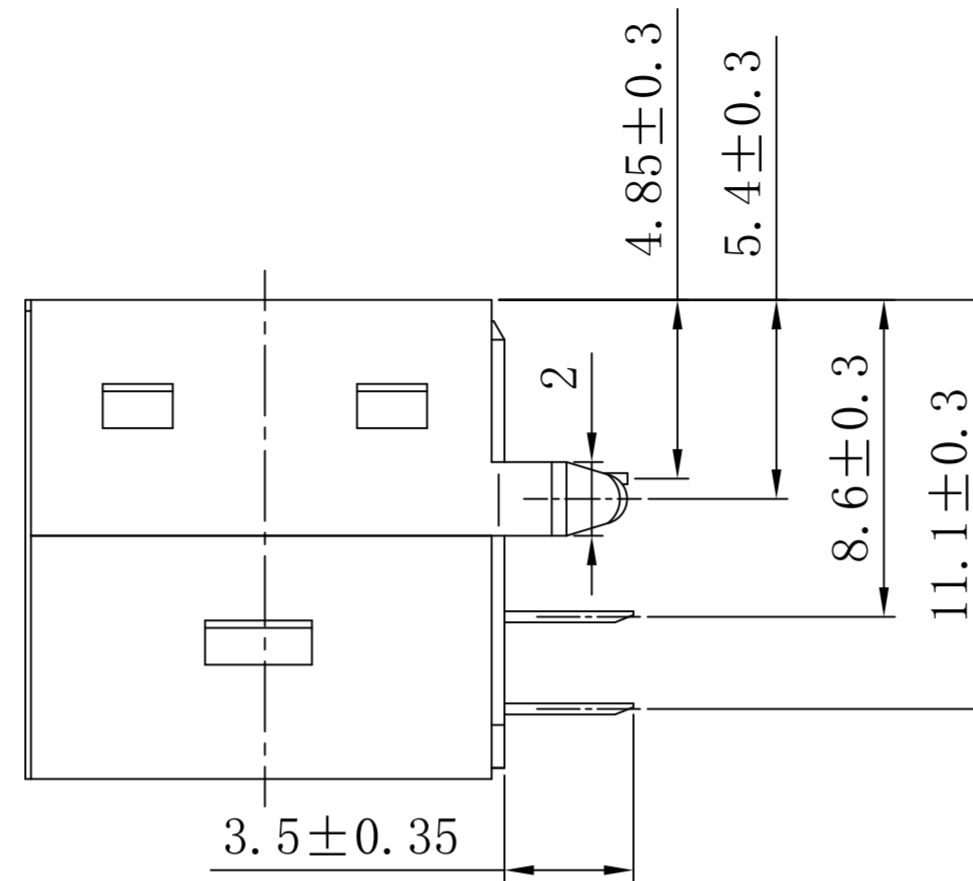
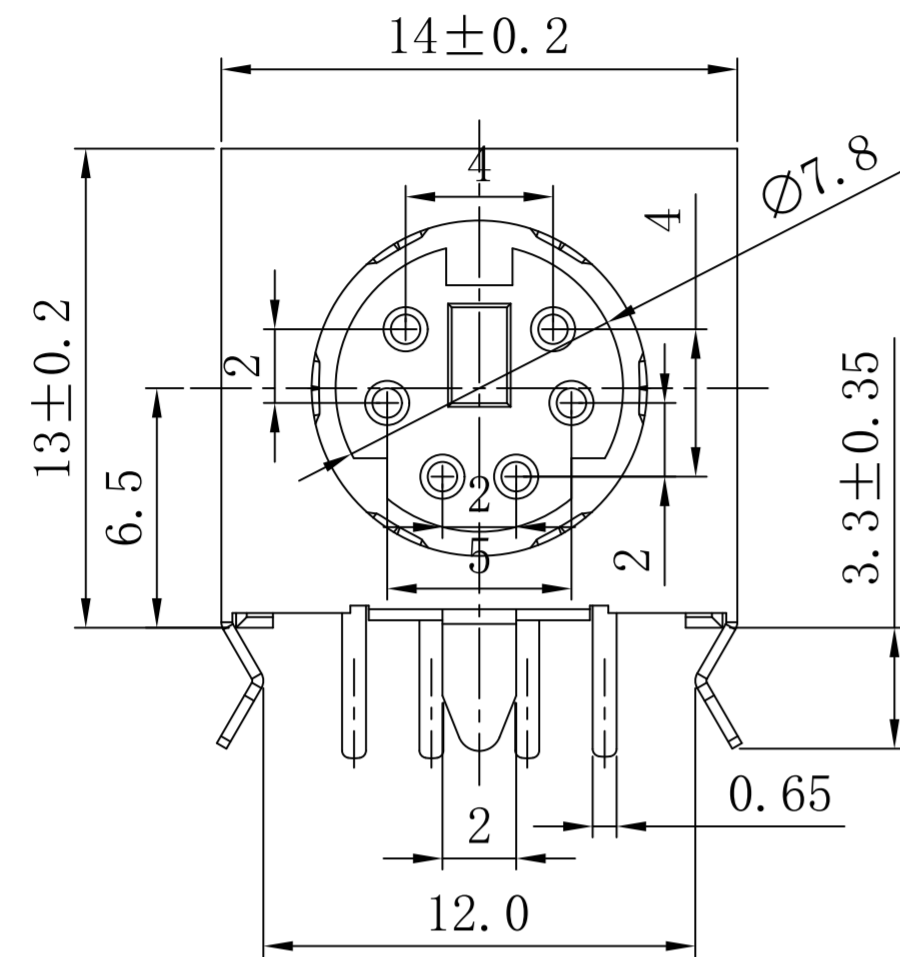


Mechanical:

REV.	ECN NO.	DESCRIPTION	DATE	APPD
A	REL		2022-10-29	



PCB board mounting hole diagram

Main technical requirements:

1. Use temperature range:

Ambient temperature: $-25 \sim +70^{\circ}\text{C}$

Relative humidity: 95% (40°C)

2. Rated load: 2A 12V AC

3. Contact resistance: $\leq 30\text{m}\Omega$

4. Insulation resistance: $\geq 100\text{M}\Omega$

5. Voltage resistance: 250V AC (50Hz) 1min

6. Insertion and removal force: $5 \sim 35\text{N}$

7. Life: ≥ 5000 times

序号	名称	数量	材料	处理
9	铁壳	1	铁皮=0.3mm	D. Cu/Sn
8	右中针	1	H62黄铜带 Y=0.2mm	D. Ni/Sn
7	左中针	1	H62黄铜带 Y=0.2mm	D. Ni/Sn
6	右长针	1	H62黄铜带 Y=0.2mm	D. Ni/Sn
5	左长针	1	H62黄铜带 Y=0.2mm	D. Ni/Sn
4	右短针	1	H62黄铜带 Y=0.2mm	D. Ni/Sn
3	左短针	1	H62黄铜带 Y=0.2mm	D. Ni/Sn
2	盖子	1	PBT	
1	基座	1	PBT	

X:X	± 0.30	APPD: TOM	LINK-PP INT'L TECHNOLOGY CO., LIMITED	
X:XX	± 0.25	CHKD: JAMES		
X:XXX	± 0.05	DR: LEO	TITLE: S terminal	
ANGLES	$\pm 1^{\circ}$	UNIT: mm	PART NO.: LPPJ6002	
	SCALE: 2/1	SHEET: 1/2	REV: A	DWG NO.: LP22102901

