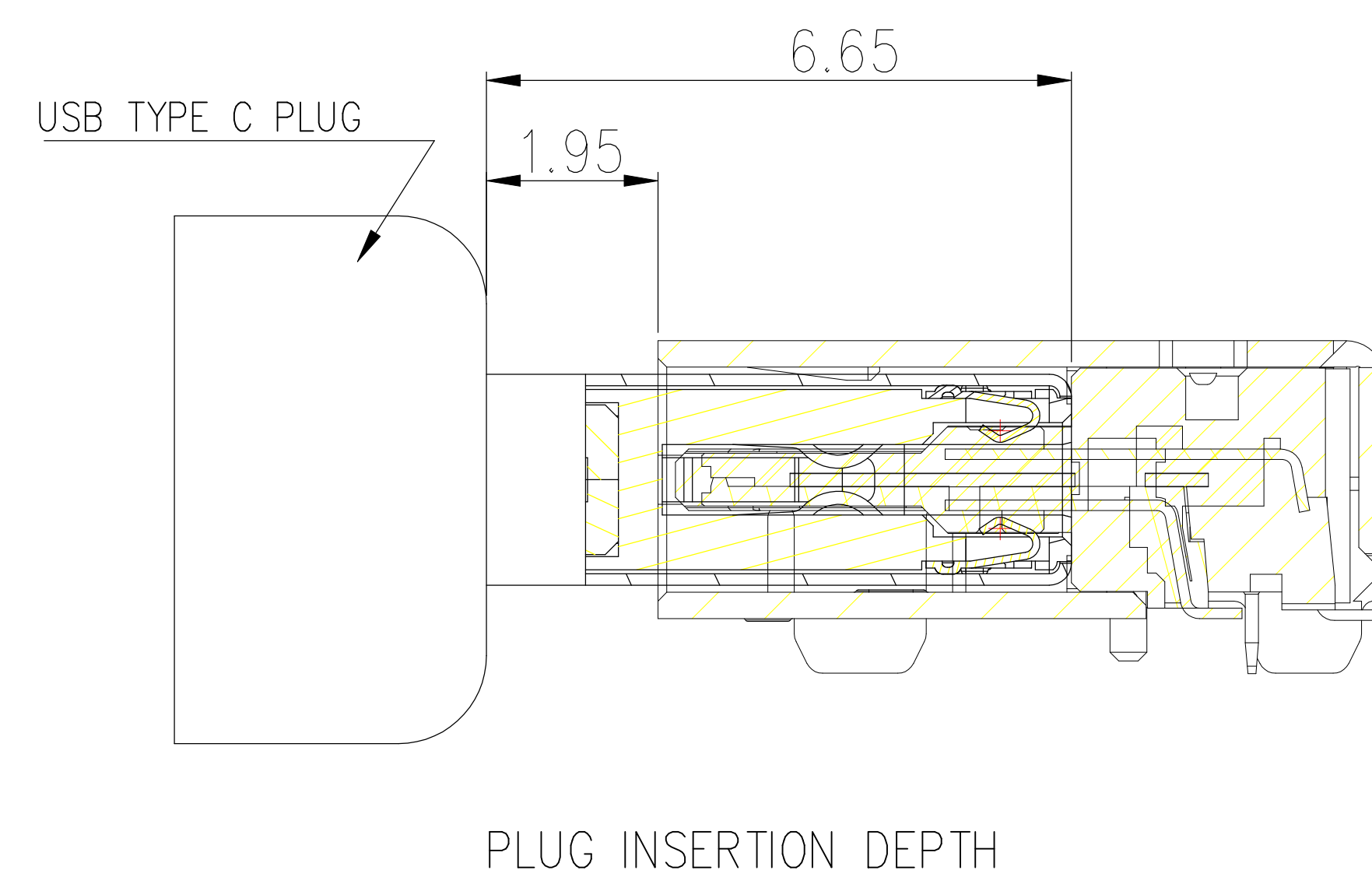
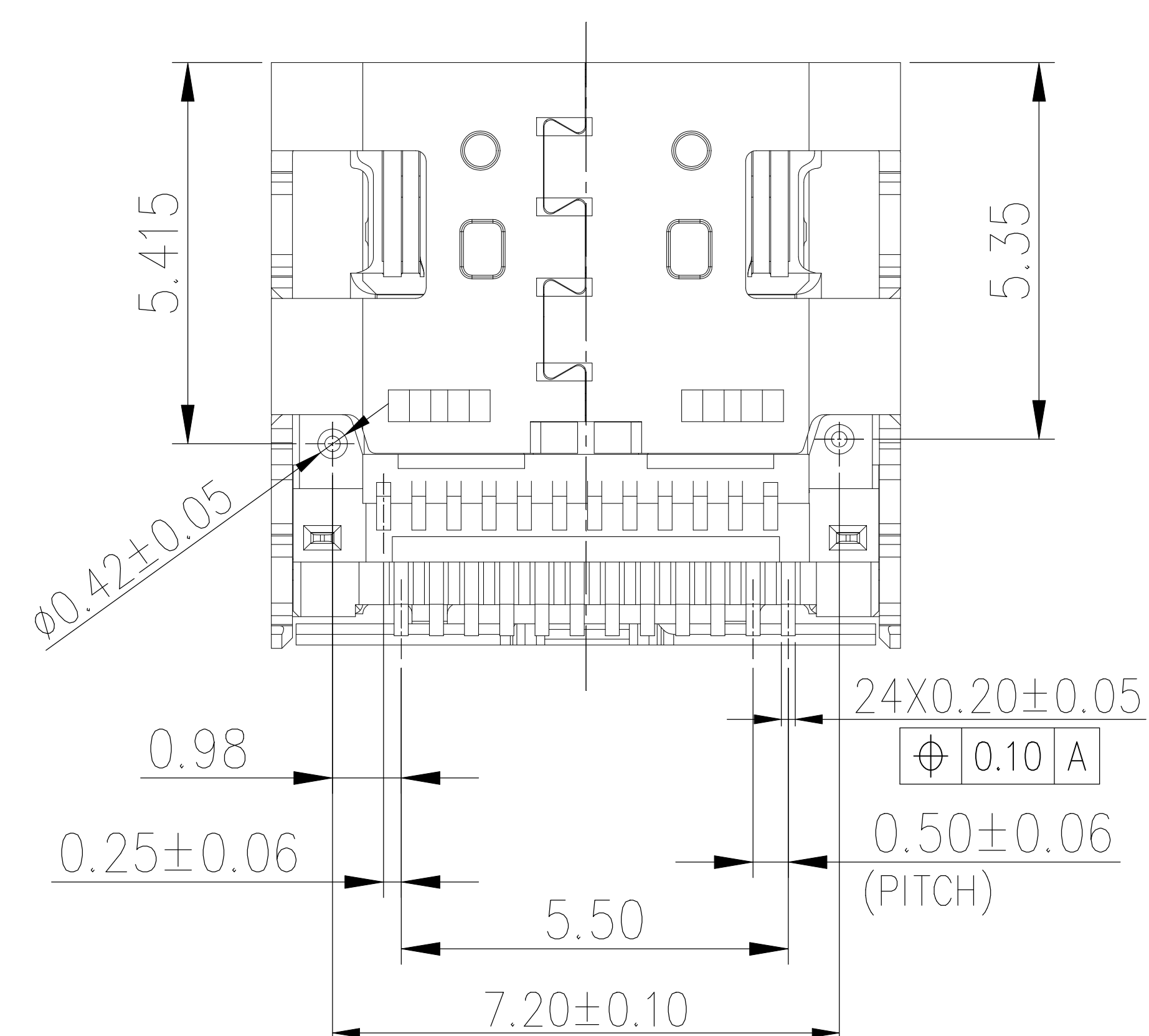
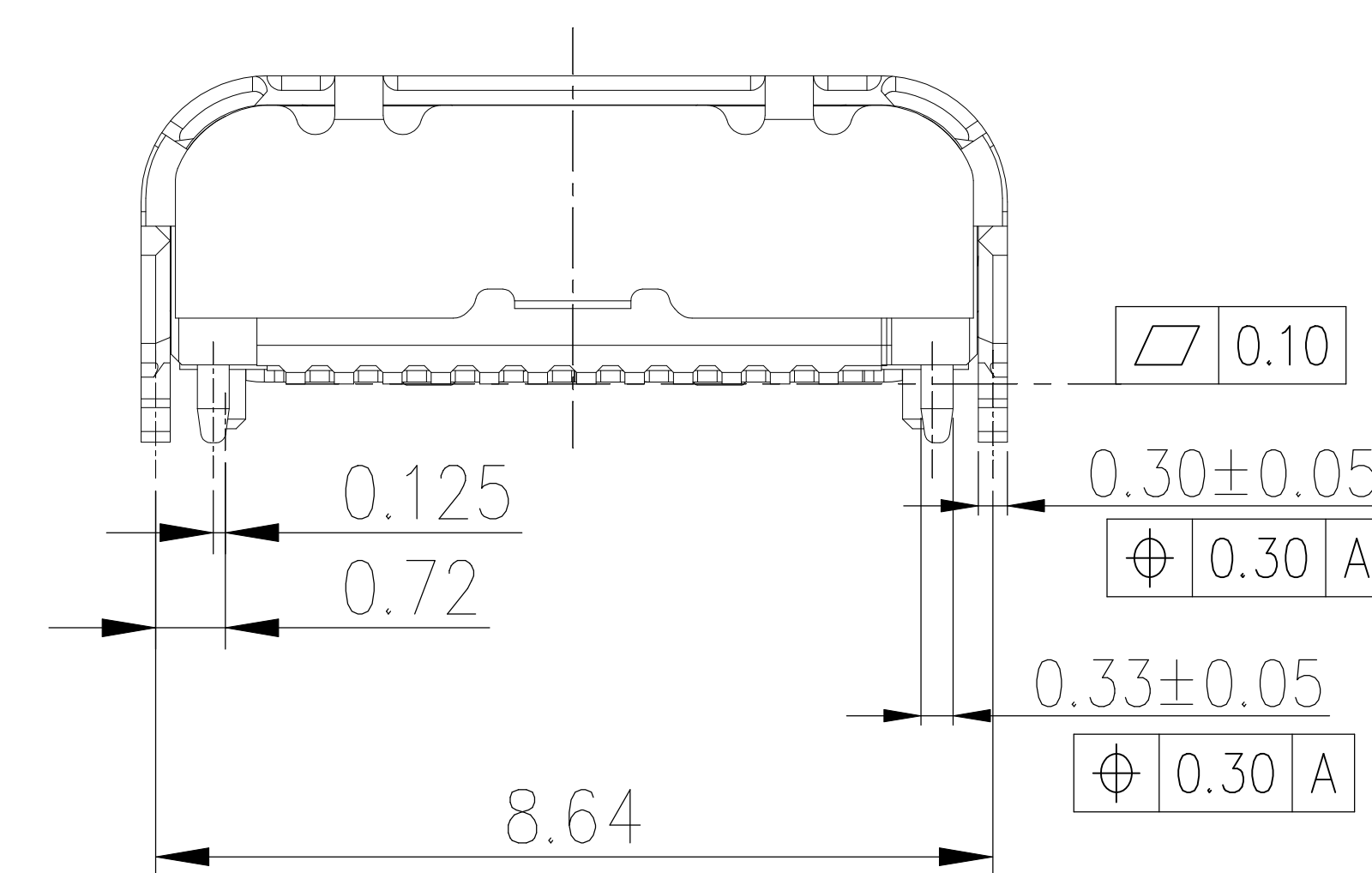
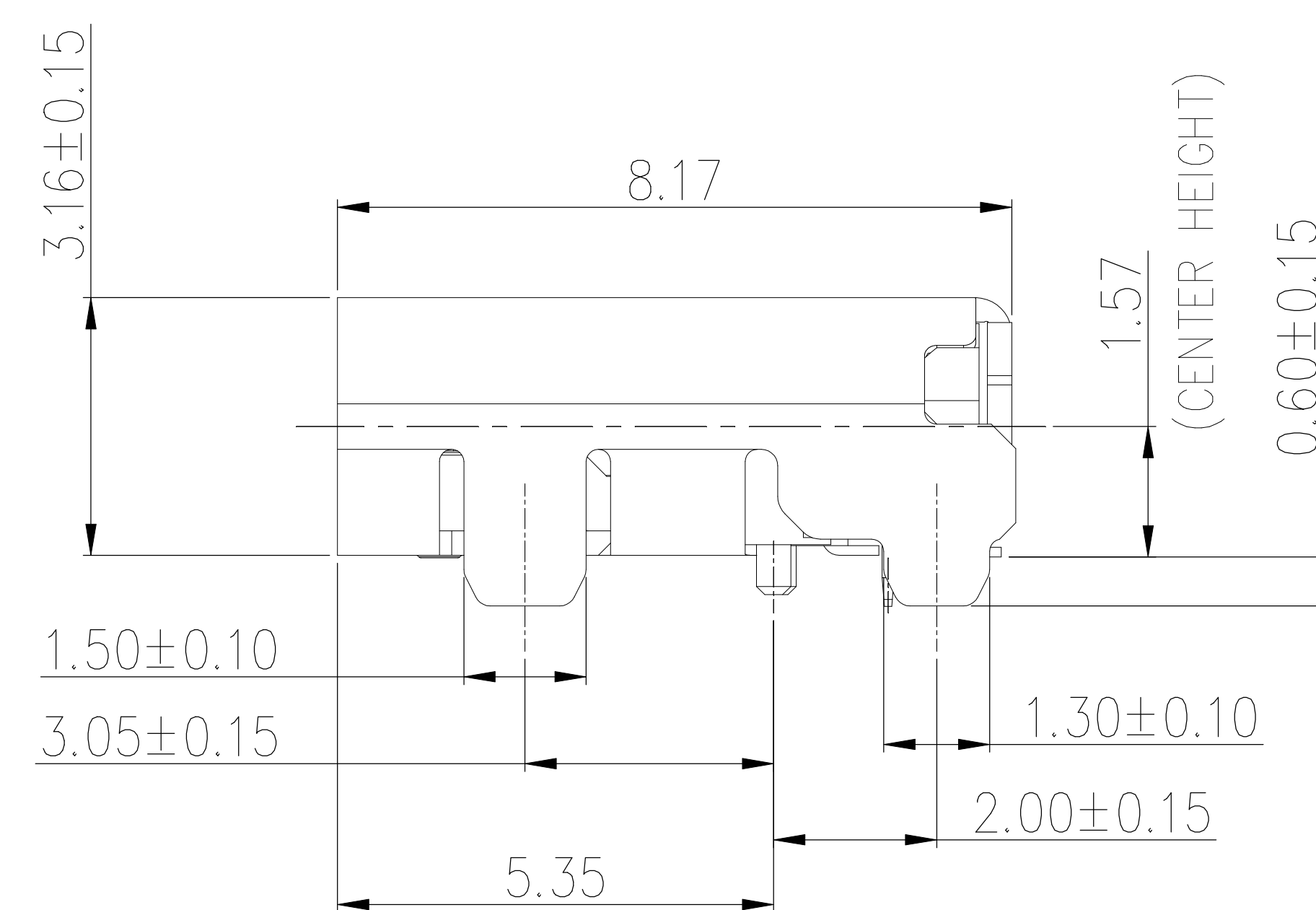
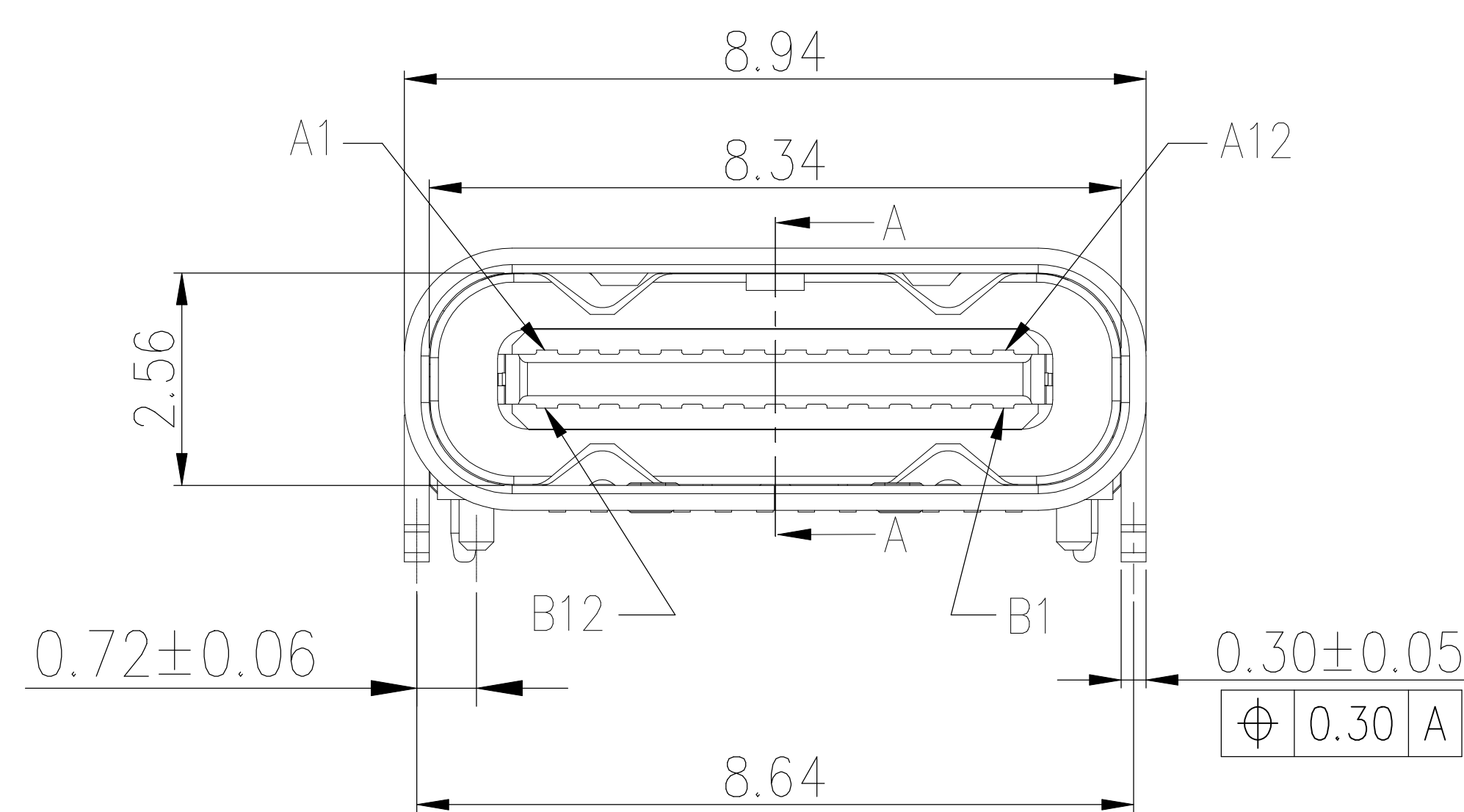
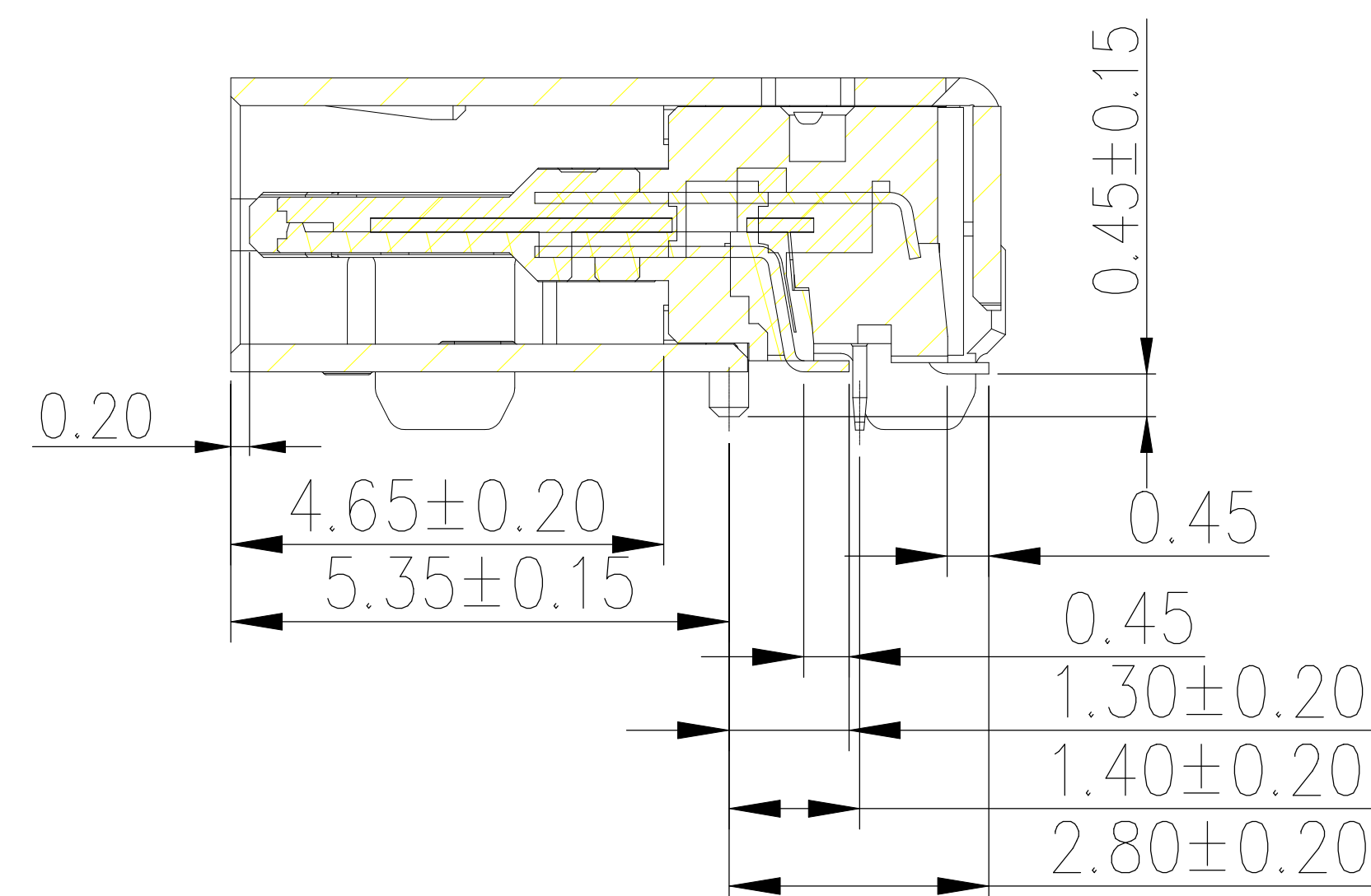
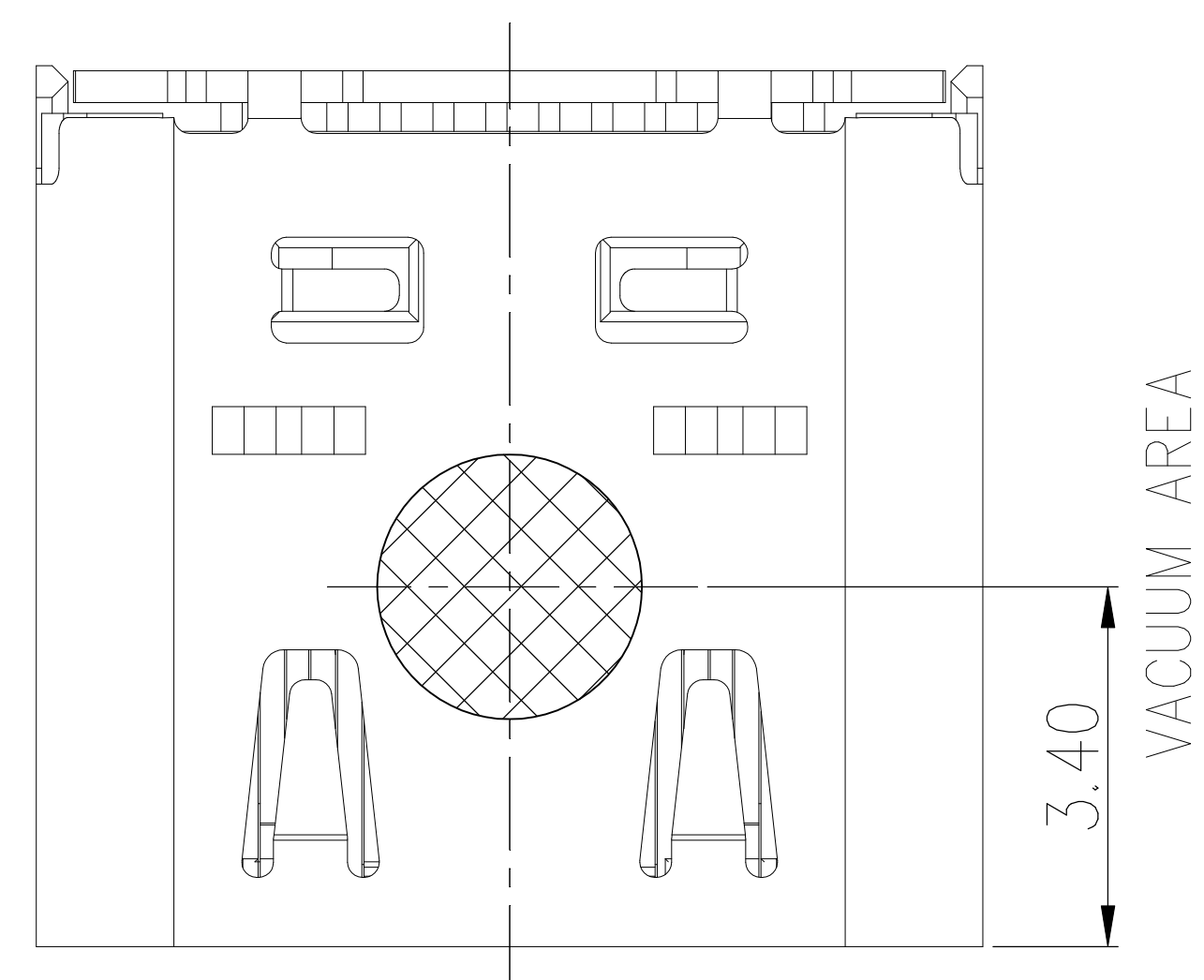


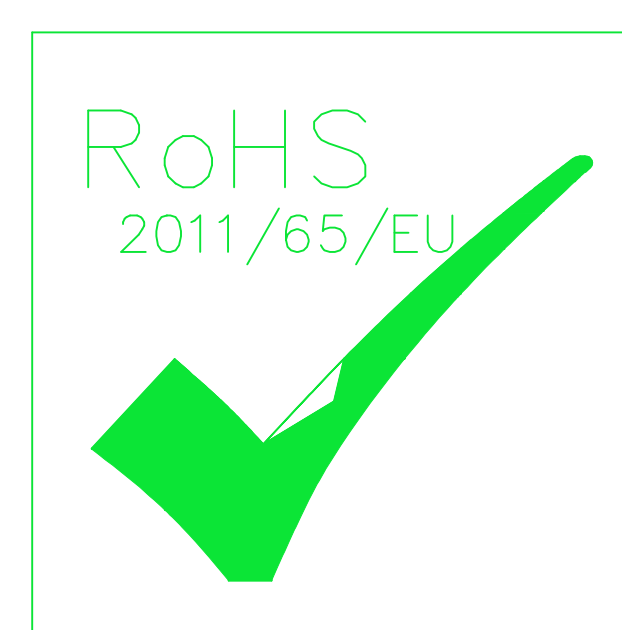
Mechanical :

REV.	ECN NO.	DESCRIPTION	DATE	APPD
A	REL		2021-03-28	



PIN ASSIGNMENT:

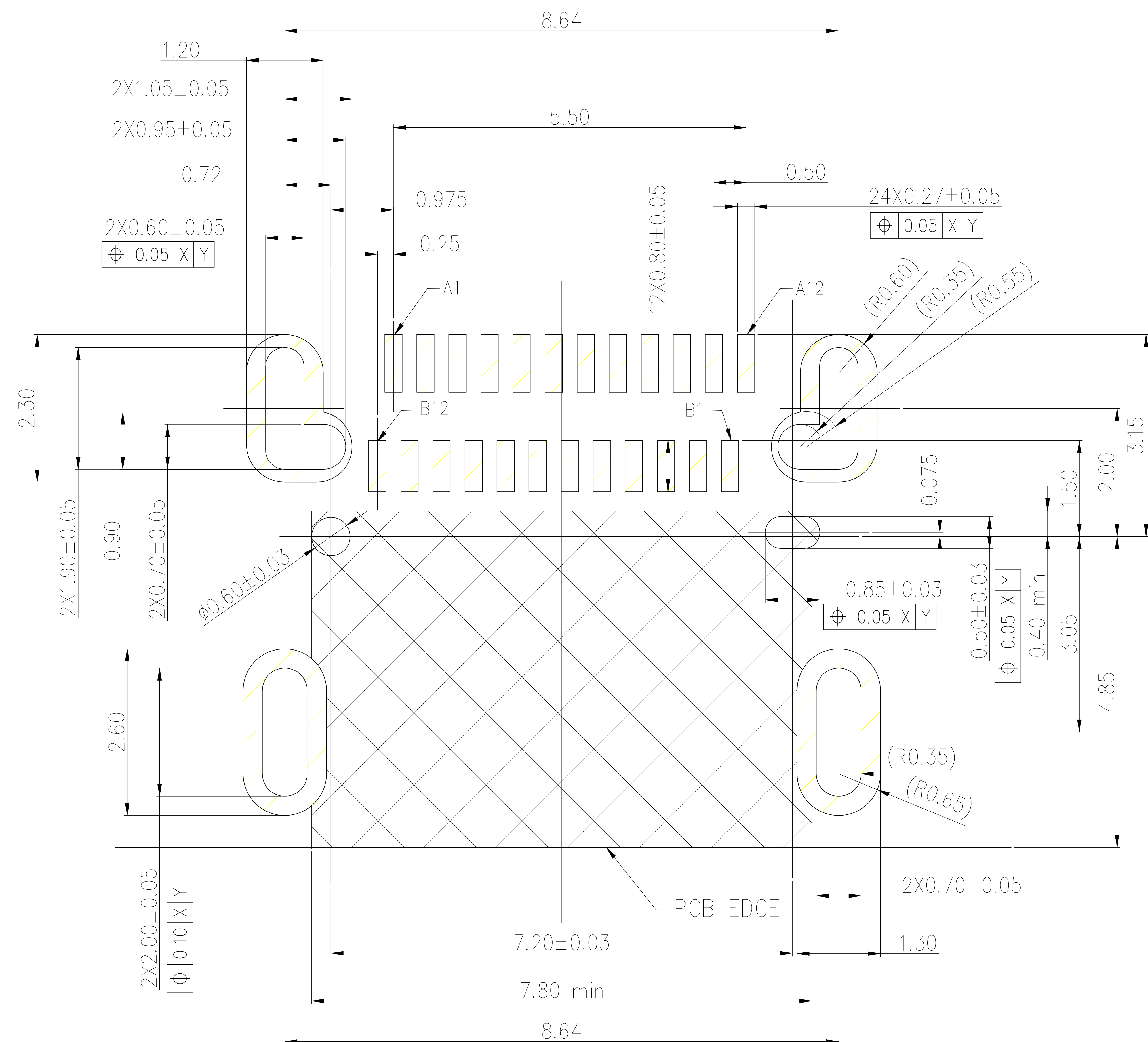
A1	A2	A3	A4	A5	A6	A7	A8	A9	A10	A11	A12
GND	TX1+	TX1-	Vbus	CC1	D+	D-	SBU1	Vbus	RX2-	RX2+	GND
B12	B11	B10	B9	B8	B7	B6	B5	B4	B3	B2	B1



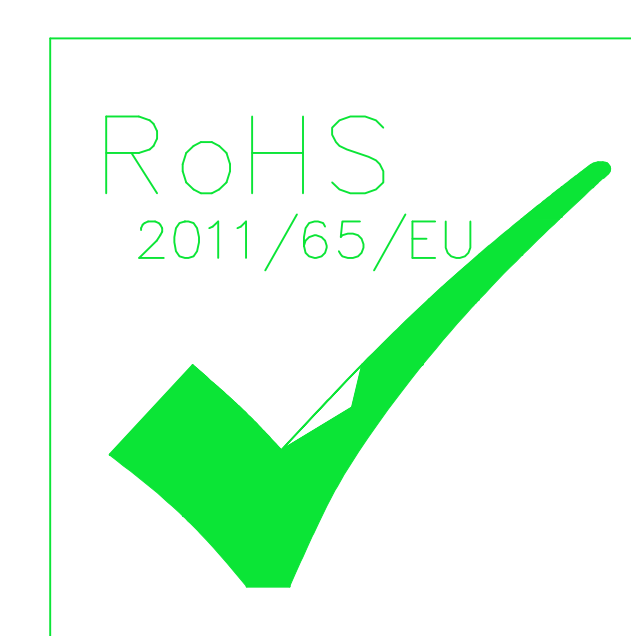
X: X	±0.30	APPD:	TOM	LINK-PP INT'L TECHNOLOGY CO., LIMITED
X: XX	±0.25	CHKD:	JAMES	
X: XXX	±0.05	DR:	LEO	TITLE: USB Type C 3.1 Female dual-row SMT board
ANGLES	±1°	UNIT:	mm	PART NO.: LPTY24P037NL
	SCALE:	2/1	SHEET:	1/3
		REV:	A	DWG NO.: LP21032820

Mechanical :

REV.	ECN NO.	DESCRIPTION	DATE	APPD
A	REL		2021-03-28	



RECOMMENDED PCB LAYOUT(TOP VIEW)
DEFAULT TOLERANCE: ±0.05



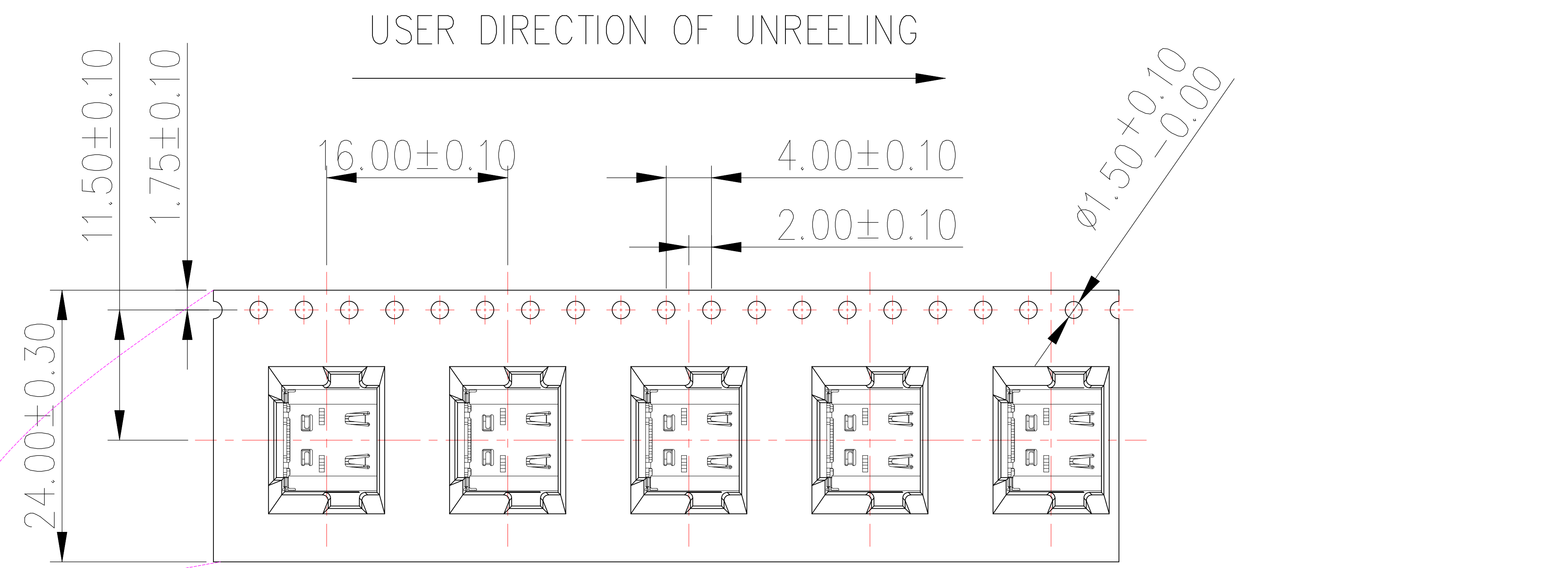
NOTES:

- MATERIAL:
 - HOUSING: PA9T UL94V-0; COLOR: BLACK
 - TERMINAL: C18140
 - SHELL: SUS304
 - MID PLATE: SUS301
- FINISH:
 - TERMINAL: Au 3u" MIN. PLATED ON CONTACT AREA; G/F PLATED ON SOLDER AREA; Ni 50u" MIN. UNDERPLATED OVERALL.
 - SHELL: Ni 30u" MIN. PLATED OVERALL
 - MID PLATE: Ni 30u" MIN. PLATED OVERALL
 - RATED CURRENT: VBUS PIN 5A; GND PIN 1.25A; Other pin 0.25A
 - RATED VOLTAGE: 5V AC.
 - CONTACT RESISTANCE: 40mΩ MAX(INITIAL). 50mΩ MAX (AFTER).
 - INSULATION RESISTANCE: 100MΩ MIN.
 - DIELECTRIC WITHSTANDING VOLTAGE: 100V AC.
- MACHINERY SPECIFICATION:
 - MATING FORCE: 5N~20N.
UNMATING FORCE: 8N~20N. (AFTER TEST: 6N~20N).
 - DURABILITY: 10000 CYCLES MIN.
- ENVIRONMENTAL SPECIFICATION:
 - OPERATING CONDITION: TEMPERATURE -40°C~+85°C; HUMIDITY 80% R.H MAX
 - SALT SPRAY: 24H
- SOLDER ABILITY: 245±5°C, 5±0.5s
- IR REFLOW: THE PEAK TEMPERATURE ON THE BOARD SHALL BE MAINTAINED FOR 10 SECONDS AT 260°C.

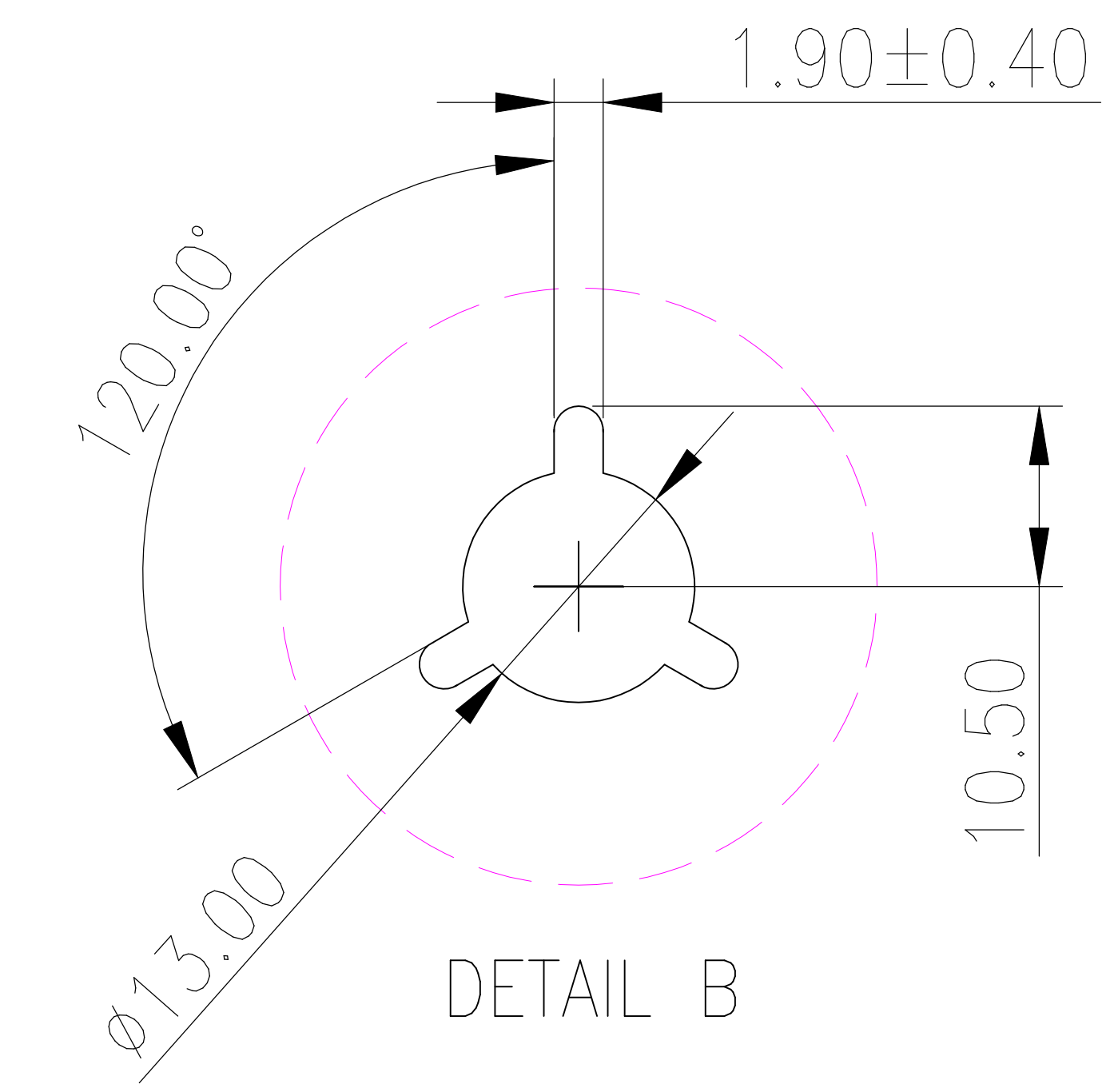
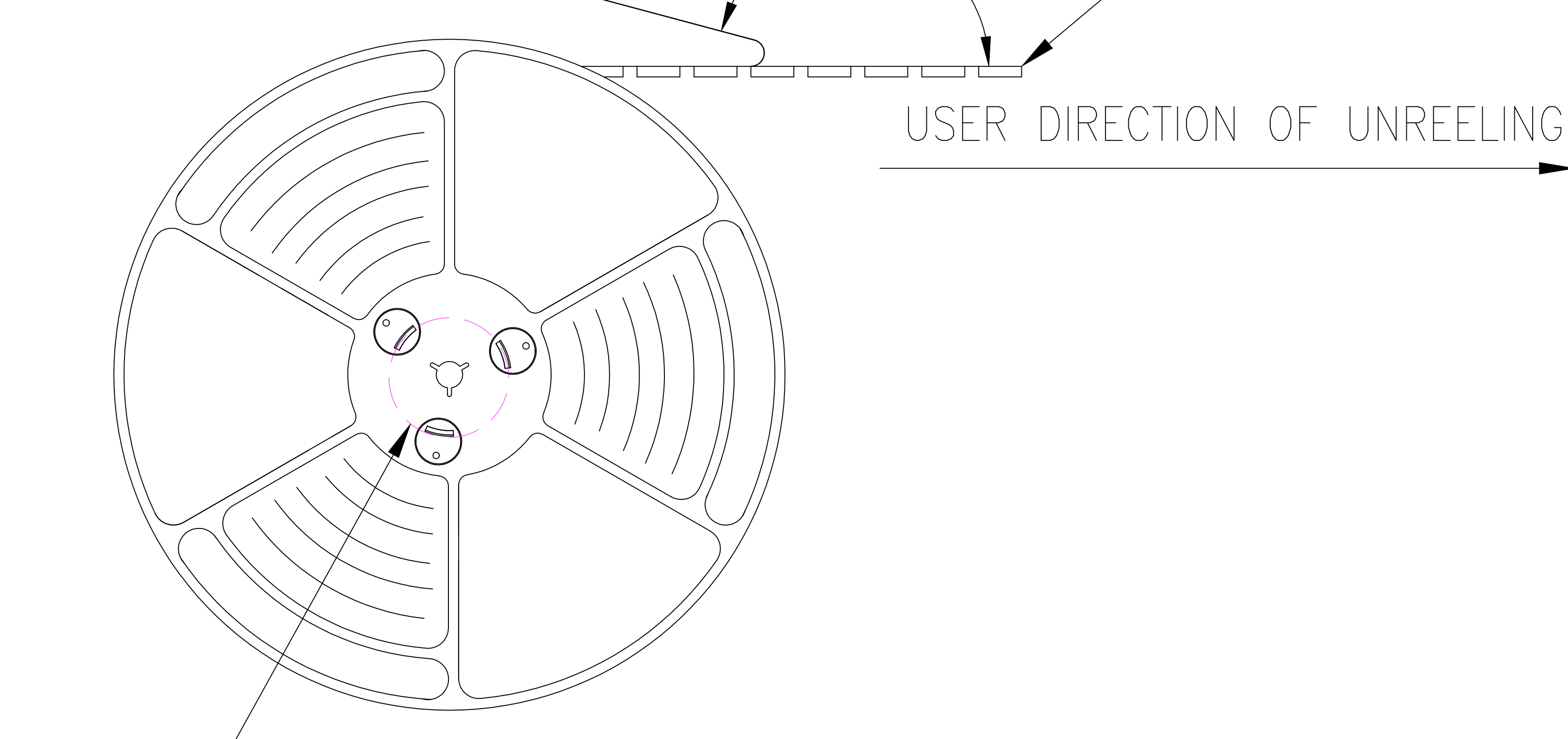
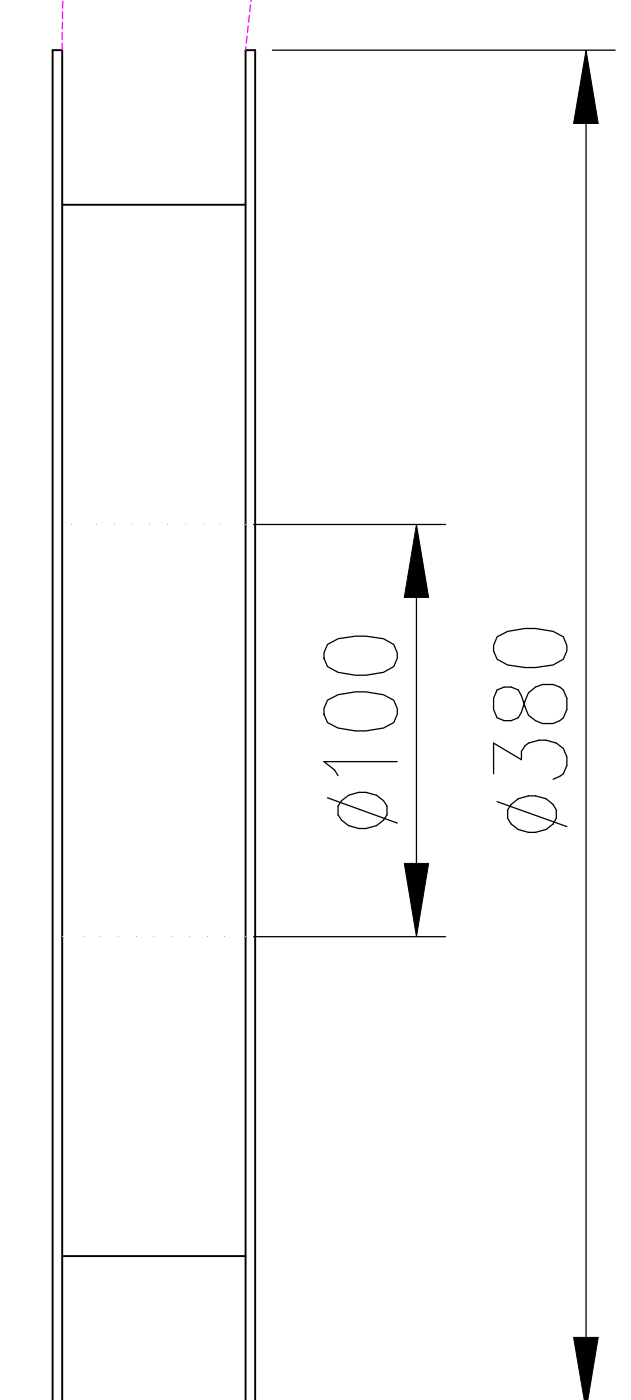
X: X	±0.30	APPD:	TOM	LINK-PP INT'L TECHNOLOGY CO., LIMITED
X: XX	±0.25	CHKD:	JAMES	
X: XXX	±0.05	DR:	LEO	TITLE: USB Type C 3.1 Female dual-row SMT board
ANGLES	±1°	UNIT:	mm	PART NO.: LPTY24P037NL
	SCALE:	2/1	SHEET:	2/3
	REV:	A	DWG NO.:	LP21032820

Package:

REV.	ECN NO.	DESCRIPTION	DATE	APPD
A	REL		2021-03-28	

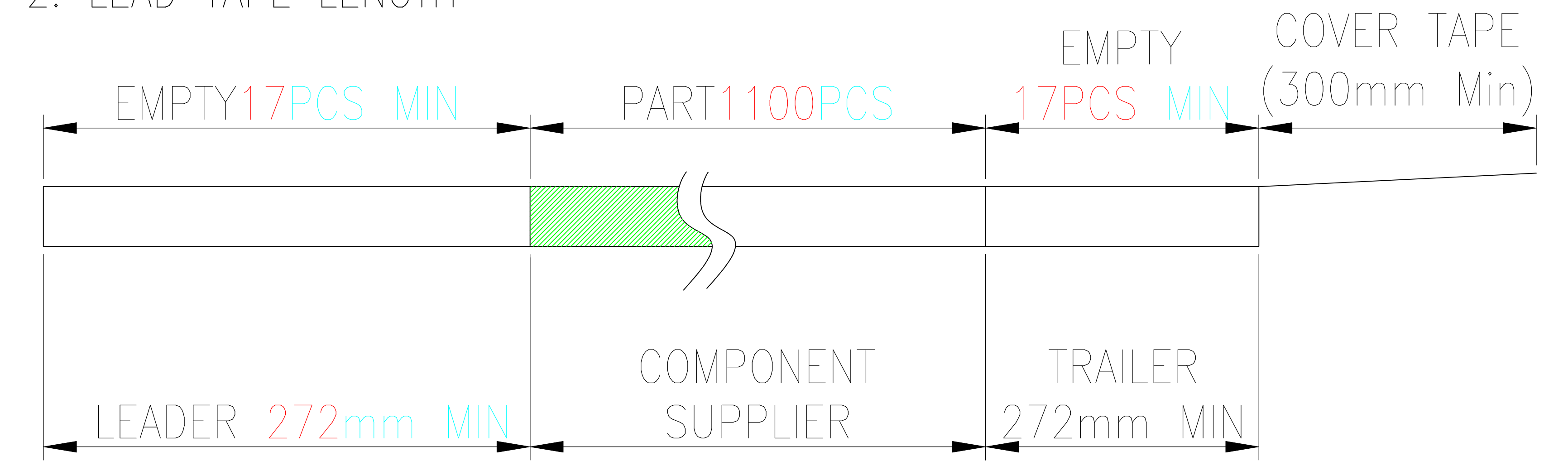


COVER TAPE PEELING ANGLE: 165°~180°
 PEELING FORCE: 20~130g
 CARRIER TAPE

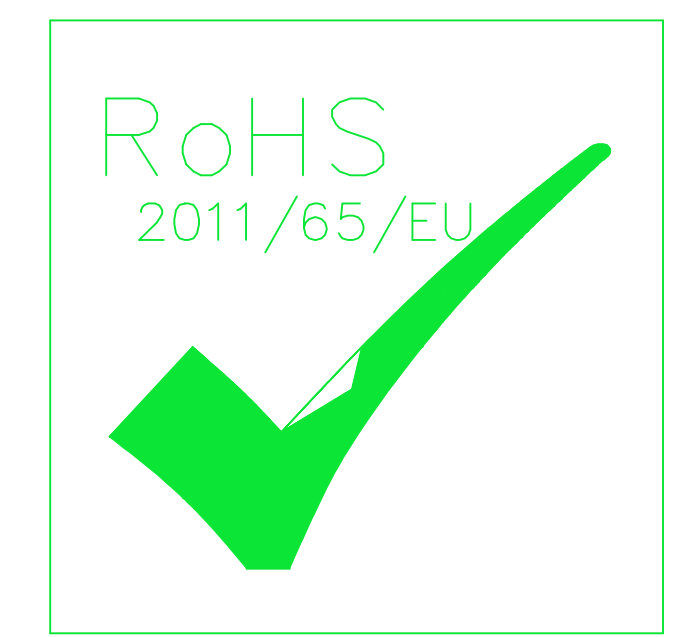
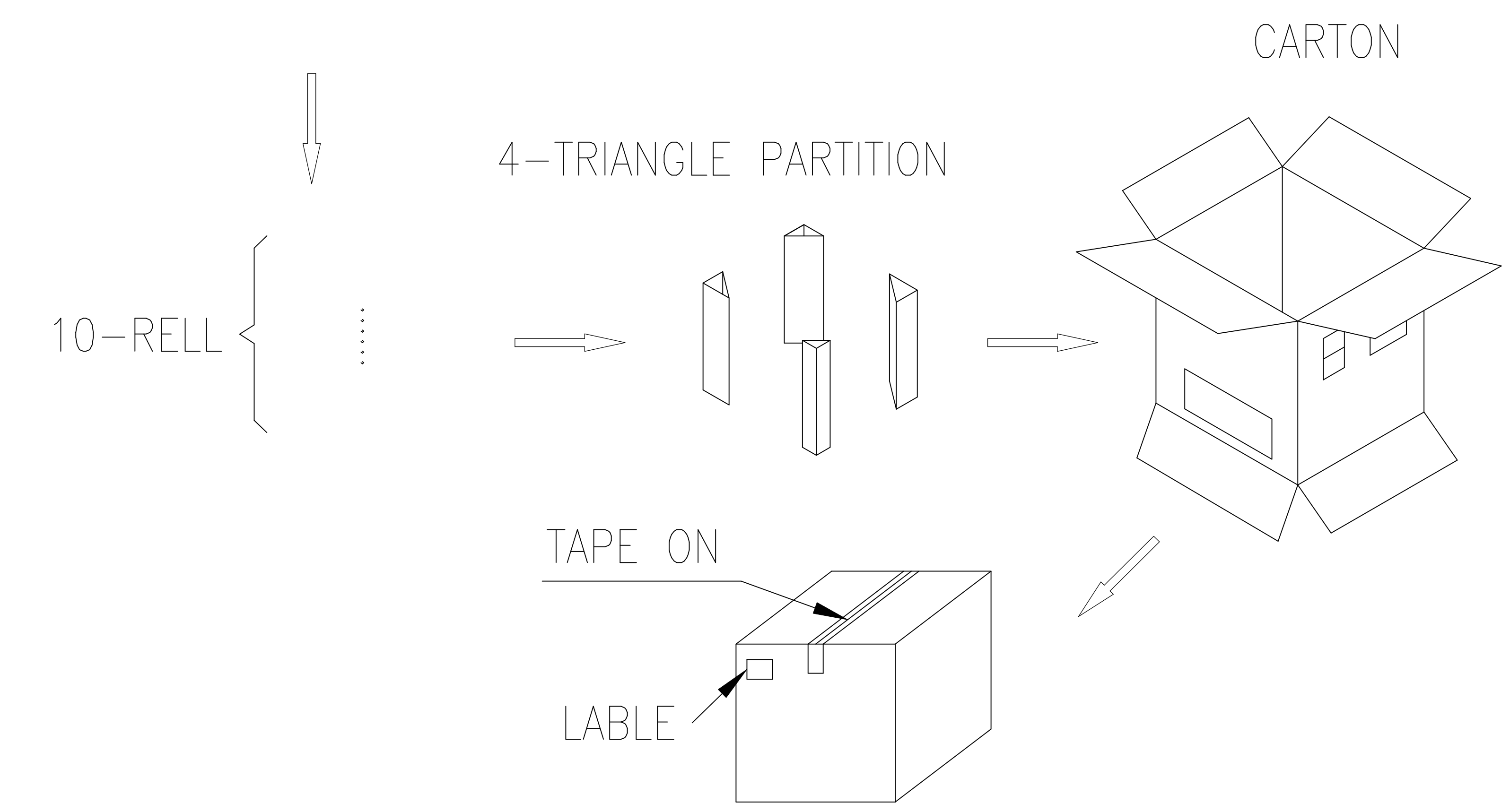


NOTES

1. NUMBER OF CONNECTORS: 1100PCS/REEL
2. LEAD TAPE LENGTH



3. QUANTITY: 11000PCS/CARTON



X: X	±0.30	APPD: TOM	LINK-PP INT'L TECHNOLOGY CO., LIMITED
X: XX	±0.25	CHKD: JAMES	
X: XXX	±0.05	DR: LEO	
ANGLES	±1°	UNIT: mm	TITLE: USB Type C 3.1 Female dual-row SMT board
PART NO.: LPTY24P037NL			
	SCALE: 2/1	SHEET: 3/3	REV: A
DWG NO.: LP21032820			